



Aluminum pole bases

High grade cast aluminum bases complement poles, sleeves, luminaires and other components of your decorative streetscape projects.

- Painted gloss black, optional colors available
- Choose base that matches diameter of the fluted pole being used

Mini base, fits 2 3/8" outer diameter pole, 7 1/4" height, slip-over style	203-00024
Mini base, fits 3" outer diameter pole, 7 1/4" height, slip-over style	203-00028
Middletown base, fits 3" outer diameter pole, 26 1/2" height, two-piece assembly	203-00131
Middletown base, fits 4" outer diameter pole, 26 1/2" height, two-piece assembly	203-00133
Minneapolis base, fits 3" outer diameter pole, 25" height, two-piece assembly	203-00134
Minneapolis base, fits 2 3/8" outer diameter pole, 25" height, two-piece assembly	203-00128

Slip-over pole base

Fits the Middletown aluminum base and other bases with 7 1/2" outer diameter. Install over pole to cover plate models or damaged concrete.

- 7 1/2" top outer diameter x 15"W base x 4 3/4"H
- Weighs 8 1/4 lb

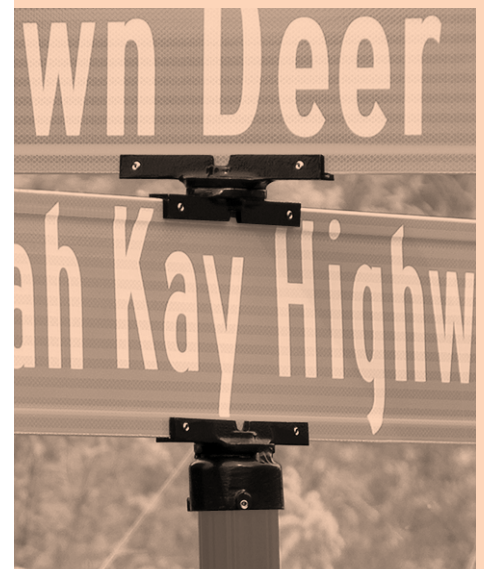


Slip-over base, black	203-00130
-----------------------	-----------



Pole and post top sign brackets

Available in models to accommodate flat and extruded sign blades. Made from high-strength aluminum. Each bracket includes set of stainless steel allen set screws.





9" slot for flat blade signs
203-00389

Ball



Fits 2 3/8" OD pole
203-00248



Fits 3" OD pole
203-00031



Fits 4" OD pole
203-00032

Pole and Sign Top Decorative Finials

Add a distinctive accent to the posts in your neighborhood, downtown or development. Produced from sand-cast aluminum, TAPCO decorative finials are powder-coated gloss black for durability. Finials are sized for 2 3/8", 3" and 4" poles and are secured with three stainless steel set screws (included).

- Optional vandal-resistant pin screws
- Custom colors are available
- Square post options available



203-00044
9" slot, flat signs

Point



Fits 3" OD pole
203-00048



Fits 2 3/8" OD pole
03-00043

Pineapple



Fits 2 3/8" OD pole
203-00700



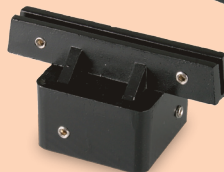
Fits 3" OD pole
203-00701



Fits 4" OD pole
203-00702



203-09204
Fits 2 3/8" OD pole,
9" slot for extruded sign blade



203-00434
Fits 2" square post,
5 1/2" slot for flat sign blade



203-09247
Fits a U-channel post,
9" slot for extruded sign blade



203-00448
Sits on top of flat sign blade,
12" slot for flat sign blade

	5 1/2" flat slot	5 1/2" extruded slot	9" flat slot	9" extruded slot	12" flat slot	12" extruded slot
2 3/8" OD round pole bracket	203-00350	203-00351	203-09202	203-09204	203-00444	203-00445
3" OD round pole bracket	203-00344	203-00349	203-00348	203-01348	—	—
1 3/4" square post bracket	203-00435	203-00437	—	—	203-00455	203-00456
2" square post bracket	203-00434	203-00436	—	—	203-00453	203-00454
U-channel bracket, slot perpendicular to post	203-00426	203-00427	203-09223	203-09247	203-00451	203-00452
U-channel bracket, slot parallel to post	203-00428	203-00429	—	—	—	—
Cross piece bracket (sits on top of sign blade)	203-00346	203-00345	203-09203	203-09205	203-00448	203-00449