

APS-30 Pay-On-Foot

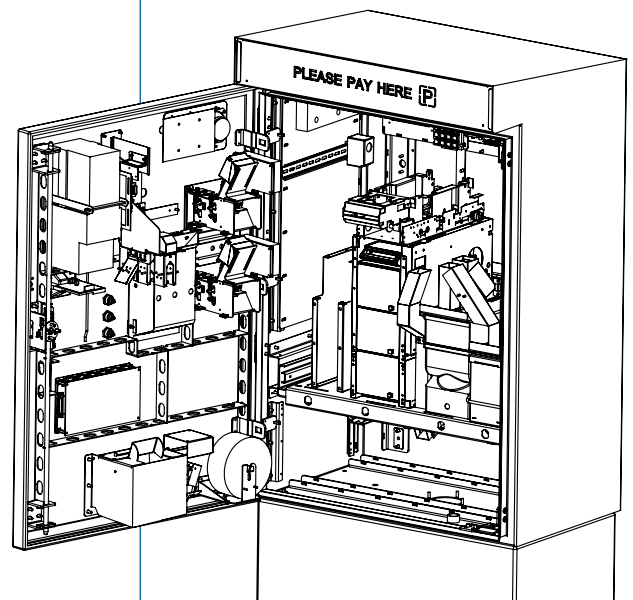
TIBA's **APS-30 Pay-On-Foot** station was designed compactly for easy installation in small spaces, such as elevator lobbies. At this highly versatile, customizable and user-friendly pay station, patrons breeze through the payment process.

The APS-30 has the option for an EMV-compatible card reader with dual interface for chip, and magnetic stripe card reader for credit card payment. Additionally, the device accepts and dispenses bills and coins, prints receipts and has an option to accept monthly card holder payments. Like most TIBA equipment, this unit accommodates a flexible rate structure. Vouchers and stickers can be used to validate tickets. A consolidated report is automatically printed via the printer when the APS-30 is accessed by management or maintenance personnel.

TIBA's high value products offer owners a swift ROI on parking automation projects

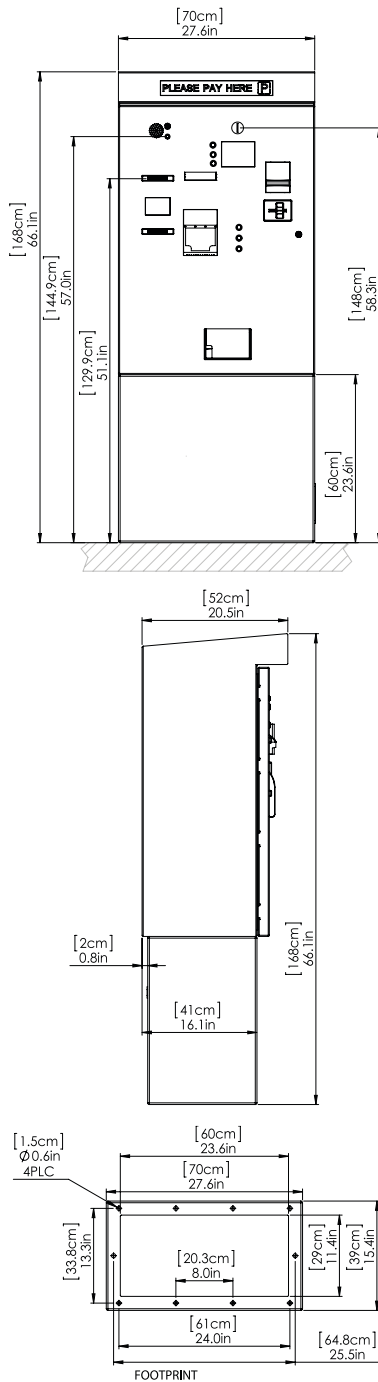
Features*

- Credit card and cash acceptance
- Coin acceptance and dispensing utilizing recycling technology
- Cash dispensing up to three notes
- Receipt printer
- Journal printer function
- Multi-language interface
- Monthly account payments
- Chaser ticket acceptance
- Dual level security via access card and mechanical lock
- Locking cash vaults
- Analog, Digital or VOIP intercom substation
- Data line surge protection and heater
- Stainless steel construction
- Custom graphic panels



* Not all features are available or standard in all regions.
Check with your local sales person for availability.

APS-30 Pay-On-Foot



Features

Ticket reader	Motorized barcode scanner
Coin Acceptor	
Coin Hopper	4 hoppers with up to 800 coins capacity each
Extra Coin Storage	For overflow control
Credit Card Reader	Magnetic stripe or EMV chip enabled dual integrated reader
Receipt Printer	
Bill Acceptor	Bills are read in all four directions
Bill Dispenser	Up to 3 denomination bill dispensing
Display	Hi-resolution TFT color display
Intercom Substation	Analog, Digital or VOIP intercom
Surge Protection	Data-line surge protector
Monthlies/Employees Account Payments	Accounts can be paid at the payment station

Operation

Processor	Embedded industrial controller
Communication & network	RS-485 industrial communication or TCP/IP ethernet communication
Clock	Built-in, backed up by lithium ion battery; Keeps clock and data for up to 10 years
Off-Line Operation	Full off-line operation capability
Monitoring	Transaction and all events monitored on TMS software in real time.

Housing-Stainless Steel

Measurements	27.6" (70 cm) width; 20.5" (52 cm) depth; 66" (168 cm) height
Weight	265 Lbs. (120 kg)
Color (Housing)	Standard: White RAL 9010 Optional: Custom colors available
Locks	Secured electronic and mechanical locking mechanism

Electrical

Voltage	100-240V AC 50-60 HZ
Current	9A max. with heater
Power Consumption	1080W with heater
Operating Voltage	5V, 12V, 24V DC

Environmental Conditions

Operating Temperature	-4° to 122° F (-20° to 50° C) with heater
-----------------------	---

Regulatory



Safety	<ul style="list-style-type: none"> • UL 60950-1:2007 • CAN/CSA-C22.2 No. 60950-1-07
EMC	<ul style="list-style-type: none"> • FCC Part 15, Subpart B, Class B • CE



Subject to design and functionality changes until product shipping.

CR-30-M All-In-One Card Reader

The **CR-30-M Entry/Exit Card Reader** is an all-in-one product that accommodates a proximity or mag stripe reader, built in loop detector, intercom substation, gate control and a smart management controller. The CR-30 is ideal for hotel guests, employees, monthly contract users, faculty and staff who do not require tickets or processing.

The unit supports a multitude of technologies including: proximity RFID, magnetic stripe, barcode, AVI, keypad, smart card and license plate recognition.

The CR-30's display provides messages such as problems with the customer's account or special messages. The unit operates in an off-line mode utilizing an onboard processor and memory.

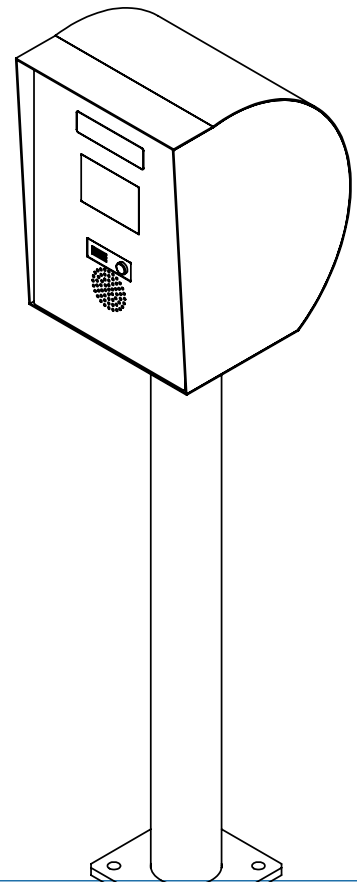
Designed for durability and enhanced for aesthetics, the unit is made with Stainless steel aluminum, supporting trouble free operations for your clients.

Features*

- 125 KHZ Proximity card reader
- TFT Hi-Res color display
- Built-In loop detector
- Analog, Digital or VOIP Intercom
- Data line surge protector
- Stainless Steel housing
- Heater
- Custom graphic panel

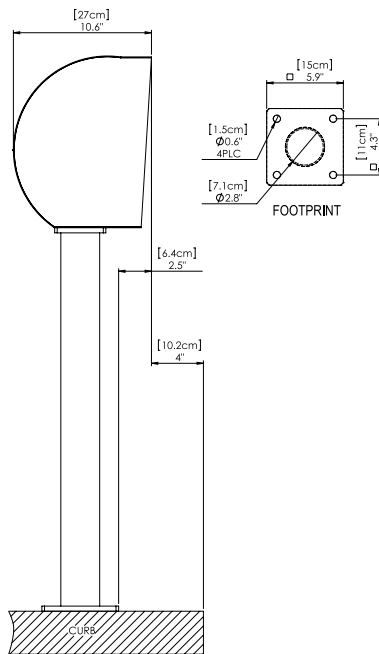
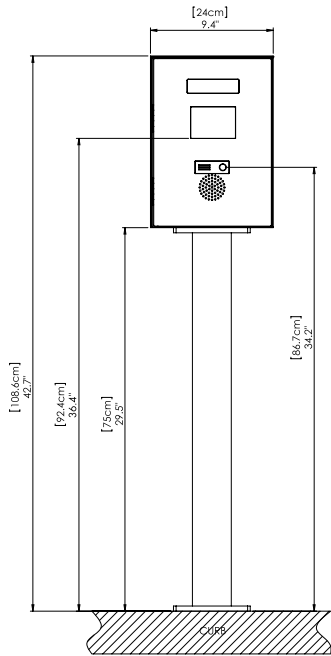
CR-30-M supports the following access reader types:

- Proximity RFID
- Magnetic card reader
- Key-Pad
- AVI tag reader
- LPR system
- Mifare RFID card reader for hotel guests
- Barcode scanner



* Not all features are available or standard in all regions.
Check with your local sales person for availability.

CR-30-M All-In-One Card Reader



Features

Recognition Method	Proximity 125 KHZ tag reader
Credential Technology Available	HID Proximity, MIFARE, Smartcard, Magnetic stripe, AVI, key-pads, barcode scanner option
Credential Support	Two of the above types, maximum
Customer Display	TFT color hi-res display
Intercom Options	Analog, digital or VOIP intercom
Data-Line Surge Protection	Supported
Hotel or Value Card	Supported
Lot Full Sign	Supported

Operation

Processor	Embedded industrial controller
Communication & Network	RS-485 industrial communication or TCP/IP network communication
Clock	Build in, backed up by lithium ion battery
Off-Line Operation	Full off-line mode enabled
Monitoring	Transaction and all events monitored on TMS software in real time

Housing – Rugged Aluminum

Measurements	9.4" (24 cm) width; 10.6" (27 cm) depth; 42.7" (108.6 cm) height
Weight	25 lbs. (11.3 kg)
Color (Housing)	Standard: White RAL 9010 Optional: Custom colors available

Electrical

Voltage	100-240V AC 50-60 HZ
Current	1A, 2A with heater
Power Consumption	100W, 200W with heater
Operating Voltage	24V DC

Environmental Conditions

Operating Temperature	-4° to 122° F (-20° to 50° C) with heater
IP Rating	54

Regulatory



- Safety • UL 60950-1:2007
• CAN/CSA-C22.2 No. 60950-1-07
- EMC/FCC • FCC Part 15, Subpart B, Class B
• CE EMC



Subject to design and functionality changes until product shipping.

Distributed by



1-800-236-0112
www.tapconet.com

5100 West Brown Deer Road
Brown Deer, WI 53223



CT-20 Cashiering Terminal

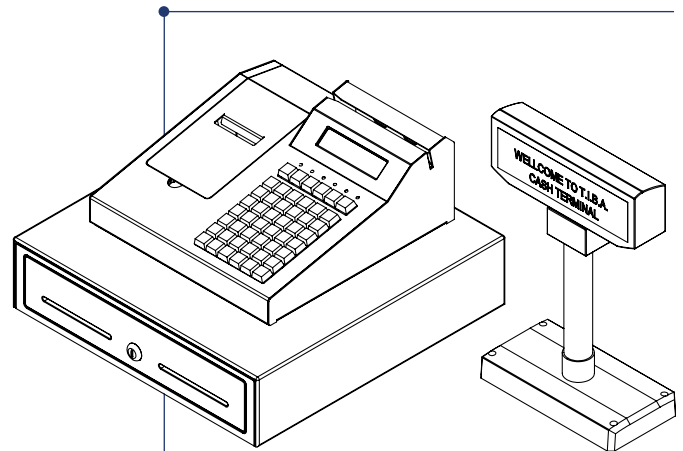
Designed for ultimate simplicity and ease of use, the **CT-20 Cash Terminal** can be used in all cashier applications including exit pay, central pay and valet. Its compact modular device is constructed to work well in tight spaces such as valet podiums, cashier booths and kiosks. Each unit supports the options for an integrated credit card reader, barcode scanner, cash drawer and remote fee display. Additionally, it features 16 programmable keys and offers the capability of programming 99 additional validations. Smaller facilities may choose the terminal as a stand-alone unit, while larger facilities can control and monitor the cashier terminal through the management software.



A key feature in the CT-20 is the cashier tracking system that can track multiple cashiers using a sign-on/sign-off tour of duty function. Each cashier receives a printed summary of their revenue and transactions when they sign off, and the facility manager can run an end-of-day report summarizing all activity by cashier and daily totals. For a system that interfaces with TIBA's SmartPark facility management software, information is duplicated on the server and available for report functions.

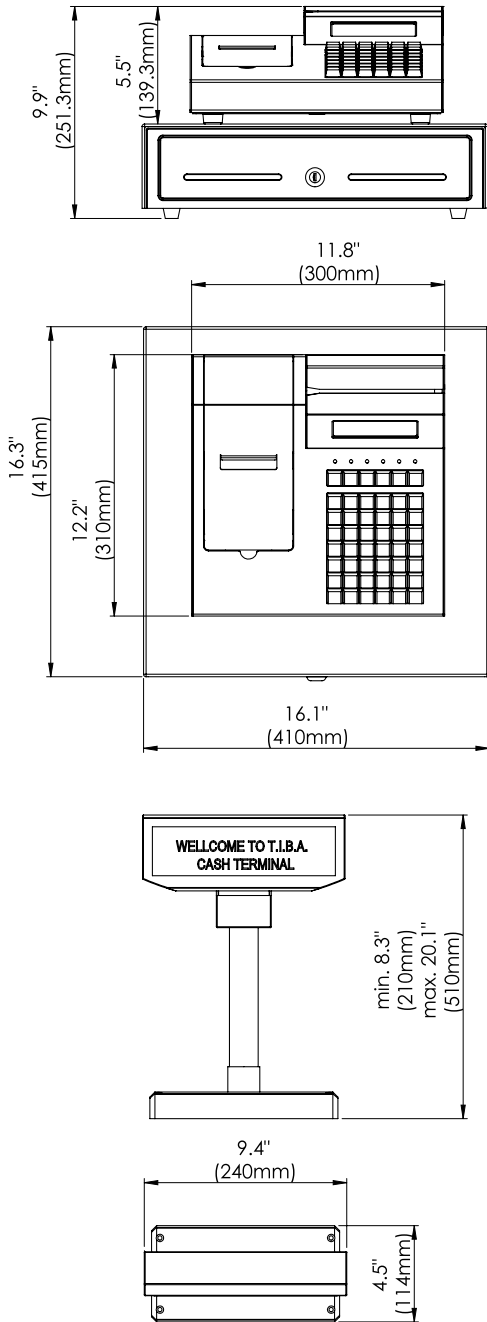
Features*

- TFT Color hi-res display
- Up to 32 cashiers and expandable. Login via password or cashier card
- Controls up to 4 lanes of traffic
- Built-in receipt printer (2¼" paper width)
- Built-in magnetic card reader to accept credit and debit cards
- EMV compatible with dual interface for chip and magnetic stripe cards for credit card payment
- Integrates with majority of proximity card readers
- Additional units can be connected in the Master-Slave configuration
- Rates can be fully programmed (password protected)
- Management software connection
- TIB@PAY PCI Compliant PA-DSS Credit card server connection



* Not all features are available or standard in all regions.
Check with your local sales person for availability.

CT-20 Cashiering Terminal



Features

Credit Card Reader	Integrated or EMV Chip & Pin Device
Receipt Printer	Integrated; EPSON Thermal printer; 2¼" paper width
Display	TFT Color hi-res display
Barcode Scanner	Standard
Cash Drawer	Standard
Validation Keys	18 dedicated validation keys; 99 additional validations supported
Customer Fee Display	Supported
Lane Capacity	Controls up to 4 lanes
Card Readers Support	Integrates with proximity and AVI readers

Software Features

Reporting	Includes open tickets report, shift report, X & Z reports and Grand Total report
Pricelists	Advanced pricelist management
Cashiers	Cashiers management with security access levels

Operation

Processor	Embedded industrial controller
Communication & Network	RS-485, 232 industrial communication or TCP/IP ethernet communication
Clock	Built-in; backed up by lithium ion battery; keeps clock and data for up to 10 years
Off-Line Operation	Full off-line operation capability
Monitoring	Transaction and all events monitored on FMS software in real time

Housing – Rugged Steel

Measurements	16.1" (41 cm) width; 16.3" (41.5 cm) depth); 9.9" (25.1 cm) height
Weight	Fee computer – 10 Lbs. (4.5 KG) Cash drawer – 15 Lbs. (6.8 KG)
Color (Housing)	Black

Electrical

Voltage	100-240V AC, 50-60 HZ
Current	1.35A
Power Consumption	135W
Operating Voltage	5V, 12V DC

Environmental Conditions

Operating Temperature	-4° to 122° F (-20° to 50° C) with heater
-----------------------	---

Regulatory



Safety	<ul style="list-style-type: none"> • UL 60950-1:2007 • CAN/CSA-C22.2 No. 60950-1-07
EMC	<ul style="list-style-type: none"> • FCC Part 15, Subpart B, Class B • CE



Subject to design and functionality changes until product shipping.

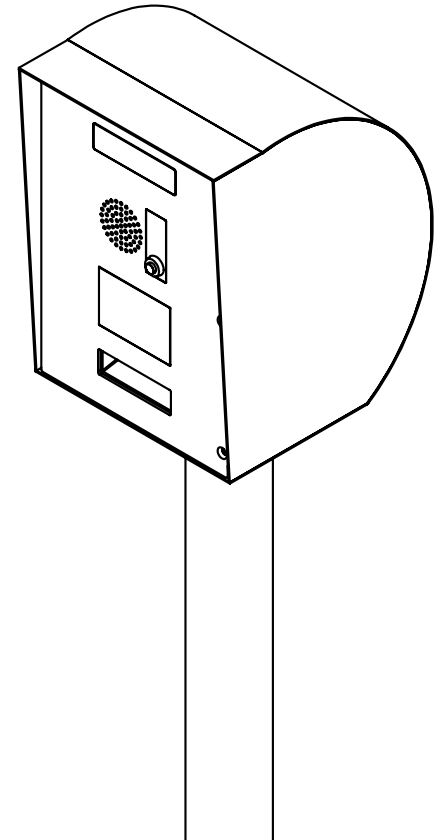
CV-30 Validation/Access Control

TIBA's multipurpose and user friendly **CV-30** meets the manifold needs of vendors. With this intelligent unit, patrons can scan printed bar codes for parking self-validation or unlock pedestrian doors from a parking facility with their parking ticket for greater security. The CV-30 can be activated or deactivated at programmable days and times, perfect for event venues. Validations are monitored in real-time in the TMS – SmartPark management software.

Vendors can pre-programmed a validation schedule as defined in TIBA SmartPark. Access control parameters are pre-programmed in TIBA SmartPark.

Features*

- Barcode scanner
- OLED display
- Proximity card reader
- Pedestal or wall mount
- Communications line surge protector
- Analog, Digital or VOIP Intercom
- Custom graphic panel, heater

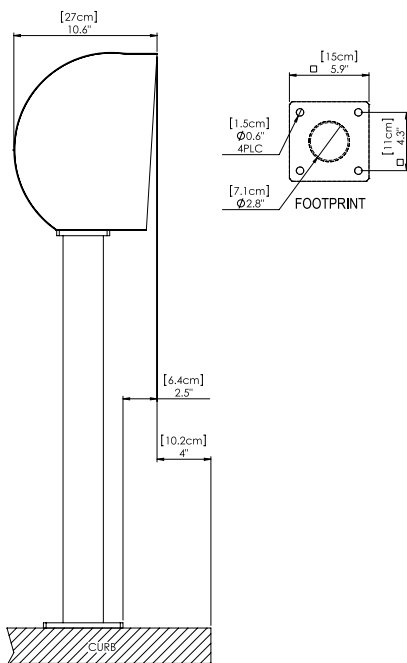
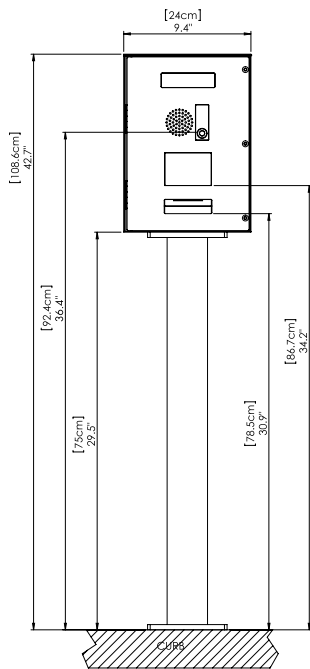


ATLANTA, GEORGIA U.S.A.
5126 South Royal Atlanta Drive
Tucker, Georgia 30084
U.S.A.
770.491.7586 Phone
770.934.3384 Fax
www.tibaparking.com

* Not all features are available or standard in all regions.
Check with your local sales person for availability.

CV-30

Validation/ Access Control



Features

Recognition Method	Barcode scanner
Credential Technology	Proximity reader
Customer Display	OLED Display
Intercom Options	Analog, digital or VOIP intercom
Data-Line Surge Protection	Standard

Operation

Processor	Embedded industrial controller
Communication & Network	RS-485 industrial communication or TCP/IP network communication
Off-Line Operation	Full off-line mode enabled
Monitoring	Transaction and all events monitored on TMS software in real time

Housing – Rugged Aluminum

Measurements	9.4" (24 cm) width; 10.6" (27 cm) depth; 42.7" (108.6 cm) height
Weight	25 lbs. (11.3 kg)
Color (Housing)	Standard: White RAL 9010 Optional: Custom colors available

Electrical

Voltage	100-240V AC 50-60 HZ
Current	1.5A, 2A with heater
Power Consumption	180W, 240W with heater
Operating Voltage	12V DC

Environmental Conditions

Operating Temperature	-4° to 122° F (-20° to 50° C) with heater
IP Rating	54

Regulatory



- Safety • UL 60950-1:2007
• CAN/CSA-C22.2 No. 60950-1-07
- EMC/FCC • FCC Part 15, Subpart B, Class B
• CE EMC



Subject to design and functionality changes until product shipping.

5126 South Royal Atlanta Drive • Tucker, Georgia 30084 • U.S.A. • 770.491.7586 Phone • 770.934.3384 Fax • www.tibaparking.com

Distributed by



1-800-236-0112
www.tapconet.com

5100 West Brown Deer Road
Brown Deer, WI 53223



DV-30 Desktop Validation Unit

The **DV-30 Desktop Validation Unit** is a fully customizable ticket validation device. With this unit's versatile settings merchants can use various validation types such as flat rate, discounted, hours discount and more. Validations are monitored in real-time in the TMS-Smart park management software. Validations can also be associated with a specific user group for future billing. All parking devices in the system will recognize the validation, calculate the new parking fee and update the balance accordingly.

Features*

- LCD Display
- Can operate as a stand-alone unit for hotel applications
- 4 x 4 Operator keypad
- Embedded industrial controller
- Supports RS-485 or TCP/IP communication
- Management software monitoring
- Reset time is 4 seconds
- Auto network recovery mode
- Can operate as a stand-alone unit for hotel applications
- Data line surge suppressor
- Rugged steel housing for durability

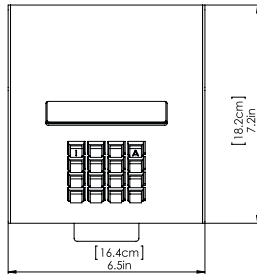
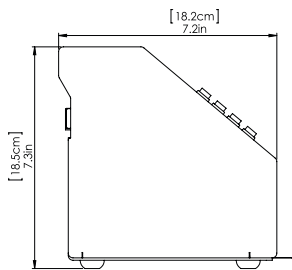
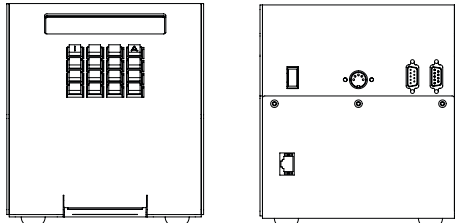
Applications

- Retail
- Office Building
- Movie Theater
- Medical Center
- Special Events
- Hotel
- Valet



* Not all features are available or standard in all regions.
Check with your local sales person for availability.

DV-30 Desktop Validation Unit



Features

Validation Method	Barcode scanning
Input/Output Devices	Encoder Unit for hotel room key encoding
Device Display	LCD display
Operator Interface	4 x 4 keypad
Data-Line Surge Protection	Standard

Operation

Processor	Embedded industrial controller
Programming	RS-485 industrial communication or TCP/IP network communication
Clock	Built in super-cap battery
Monitoring	Transaction and all events monitored on TMS software in real time

Housing – Rugged Steel

Measurements	7" (177 mm) length; 7" (177 mm) width; 7" (177 mm) height
Weight	2.55 lbs. (1.16 kg.)
Color (housing)	Dark blue

Electrical

Voltage	100-240V AC 50-60 HZ
Current	1.35A
Power Consumption	135W

Environment Conditions

Operating Temperature	-4° to 122° F (-20° to 50° C)
-----------------------	-------------------------------

Regulatory



Safety	<ul style="list-style-type: none"> • UL 60950-1:2007 • CAN/CSA-C22.2 No. 60950-1-07
EMC	<ul style="list-style-type: none"> • FCC Part 15, Subpart B, Class B • CE EMC



MP-30
Entry Station



DV-30
Validator



APS-30
Pay Station



SW-30
Exit Station



Subject to design and functionality changes until product shipping.

Distributed by



1-800-236-0112
www.tapconet.com

5100 West Brown Deer Road
Brown Deer, WI 53223



DV-30-SA Stand Alone Desktop Validation Unit

The **DV-30-SA Desktop Validation Unit** is an intelligent parking ticket validation device. It requires only power and communication is not needed. This unit allows the merchant to validate the parking ticket with a pre-defined rate or to select a different validation type.

Validation types can be flat rate, discount rate, hours discount, percentage discount, special pricelist assignment and more. Validations are monitored in the TMS-Smartpark management software. Validations can be associated to a specific user group for future billing.

All parking devices in the system will recognize the validation, calculate the new parking fee and update the balance accordingly.

Features*

- Up to 4 different validation/merchant can be used
- Thermal Barcode printer
- Rugged Steel housing
- Embedded industrial controller
- Management software monitoring
- 4 second reset

Applications

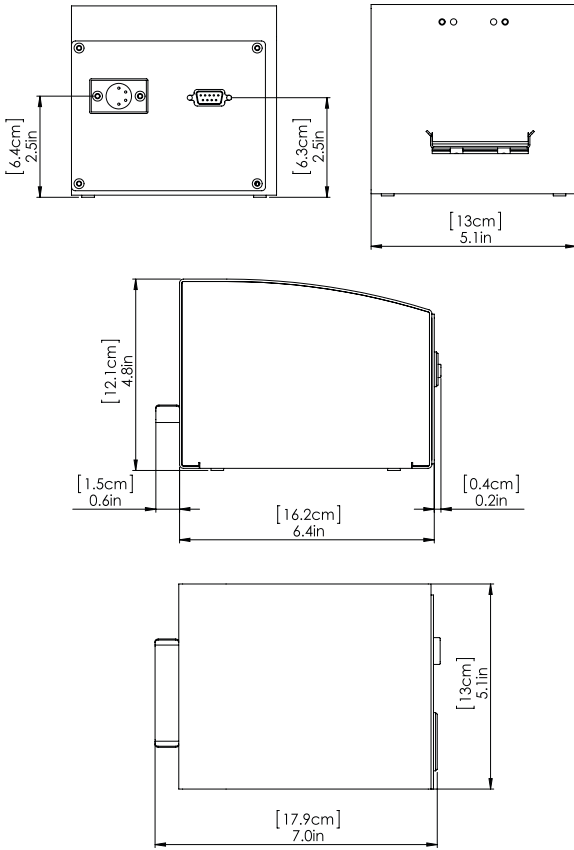
- Retail
- Office Building
- Movie Theater
- Medical Center
- Special Events



* Not all features are available or standard in all regions.
Check with your local sales person for availability.

DV-30-SA

Desktop Validation Unit



Features

Validation Method	Barcode printing
Validation Types	Supports 4 types of validation
Device Display	2 LEDs
Operator Interface	2 push-buttons

Operation

Processor	Embedded industrial controller
Programming	RS-485 industrial communication
Clock	Built in super-cap battery
Monitoring	Transactions monitored in TMS software

Housing – Rugged Steel

Measurements	6.3" (160 mm) length; 5.1" (130 mm) width; 4.1" (120 mm) height
Weight	1.5 lbs.
Color	White

Electrical

Voltage	100-240V AC 50-60 HZ
Current	2A
Power Consumption	200W

Environment Conditions

Operating Temperature	-4° to 122° F (-20° to 50° C)
-----------------------	-------------------------------



MP-30
Entry Station



DV-30-SA
Validator



APS-30
Pay Station



SW-30
Exit Station



Subject to design and functionality changes until product shipping.

Distributed by



1-800-236-0112
www.tapconet.com

5100 West Brown Deer Road
Brown Deer, WI 53223



Contract Holder
GS-07F-9924R
GS-07F-0234U



US COMMUNITIES
INTEGRATED COMMUNITARIAN SYSTEMS
Supplier Partner

eValidation Web Validation System

With TIBA's **eValidation** any regular computer with an internet connection can become a validation unit. eValidation works simply and easily by logging into a secure website and entering the ticket number for the validation to apply to the transaction in real time. Various validation types can be applied such as flat rate, discounted rate, hours discount and more. All PARCS system components recognize the validation in real-time, calculate the new parking fee and update the balance accordingly. A barcode scanner is available for high volume validation accounts.

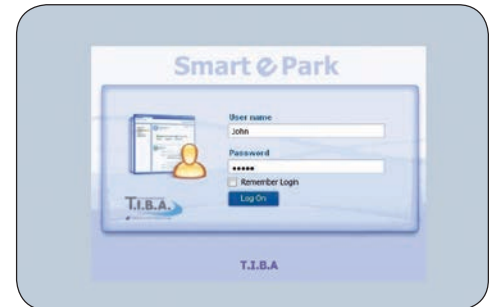
The user interface is very simple. After logging in, the user enters the patron's ticket number and authorizes the transaction. The exit transaction can be viewed by the user after the patron exits the facility. An ongoing summary of daily transactions will display in the user interface screen. The user can select different validation types, companies and accounts based on the permissions granted by the administrator of SmartPark. All functions of eValidation can be monitored and controlled from SmartPark by a systems administrator.

The facility management software provides detailed audit reports of the eValidation usage. Future billing of merchants is quick and easy and summarized reports show exactly how much to bill the merchant. In addition, reports can be exported into several formats such as: PDF, RTF, MS Excel, etc.

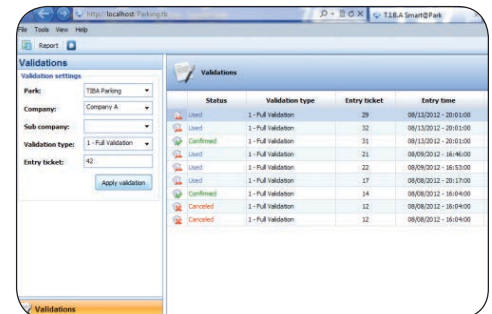
Features*

- Supports multiple validations on a single ticket
- Assign any active validation type from a selection of preconfigured flat rates, discounted rates, hours discounts and more
- Desktop barcode scanner
- Assign a special agreement rate for future merchant billing as a pre-defined rate or a special merchant pricelist
- Supported on mobile devices and tablets

* Not all features are available or standard in all regions. Check with your local sales person for availability.



Authorization session opened



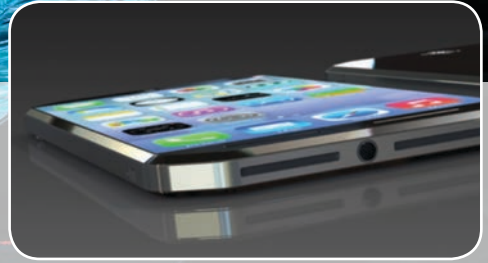
Main validations screen displays batch, quantities, users and dates

Company detailed deb					
From - Z: 987 10/03/11 20:27:41 To - Z:					
Z#	Doc#	Payment type	Ticket#	Entry time	Paym time
22	18	eValidation: 149	38	11/08/11 08:20	11/08
22	19	eValidation: 150	50136	11/08/11 08:53	11/08
22	20	eValidation: 151	50139	11/08/11 10:45	11/08
28	1	eValidation: 152	50166	11/15/11 09:22	11/15
28	1	Sticker: 109095, Batch: 1449	40509	11/15/11 09:22	11/15
28	2	eValidation: 153	50173	11/15/11 21:43	11/16
59	1	eValidation: 154	110	12/21/11 16:30	12/21
Total Company			49		

Detailed reporting of validation usage



iValidation Mobile Validation System



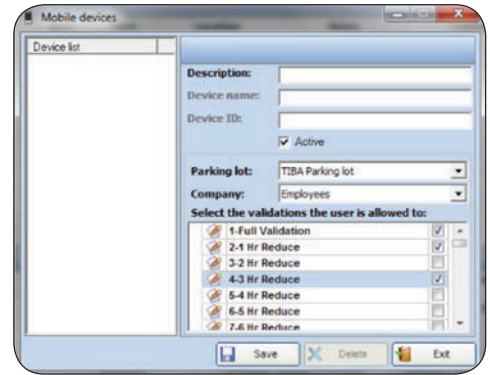
Mobile Validation is the newest and simplest solution in the parking industry, and TIBA's SmartPark Management Software makes it even simpler. Introducing iValidation, the newest addition to our wide range of smart validation solutions, where your smartphone becomes a validation unit.

Using an app, the user simply snaps a picture of the customer's ticket and a list of validation options display. Upon selection, the correct validation is applied to the ticket in real-time, and all TIBA PARCS system devices will recognize the validation, calculate the new parking fee and update the ticket balance accordingly. iValidation connects to your existing SmartPark installation and runs simultaneously with other SmartPark modules.

iValidation offers a variety of validation types including flat rate, discounted rate, hours discount and more. The iValidation app can provide validation services to a number of parking facilities from a single phone.

Features*

- Supports validations to multiple facilities from a single app instance.
- Assign validation types including flat rate, discounted rate, hours discount and more.
- Available for Apple® iPhone or iPad.



Company detailed deb					
From - Z: 987 10/03/11 20:27:41 To - Z					
Z#	Doc#	Payment type	Ticket#	Entry time	Paym time
22	18	eValidation: 149	38	11/08/11 08:20	11/08
22	19	eValidation: 150	50136	11/08/11 08:53	11/08
22	20	eValidation: 151	50139	11/08/11 10:45	11/08
28	1	eValidation: 152	50166	11/15/11 09:22	11/15
28	1	Sticker: 109095, Batch: 1449	40509	11/15/11 09:22	11/15
28	2	eValidation: 153	50173	11/15/11 21:43	11/16
99	1	eValidation: 154	110	12/21/11 16:30	12/21
Total Company			49		

Detailed reporting of validation usage



* Not available in all regions. Check with your local sales person for availability.

LPR-30 License Plate Recognition System

Now with **License Plate Recognition (LPR)** each vehicle is connected to the parking ticket received upon entering the parking facility. LPR gives parking managers and operators tight control over all the different populations passing through the parking facility gates, directly resulting in:

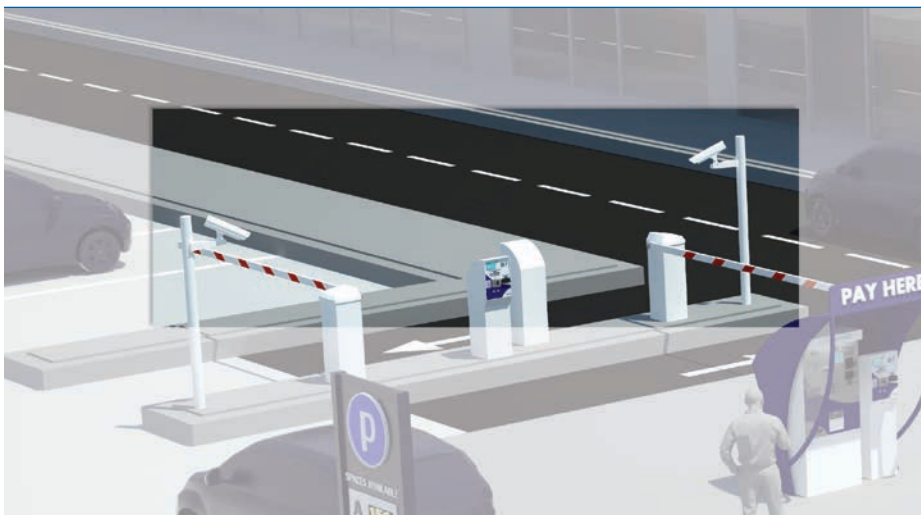
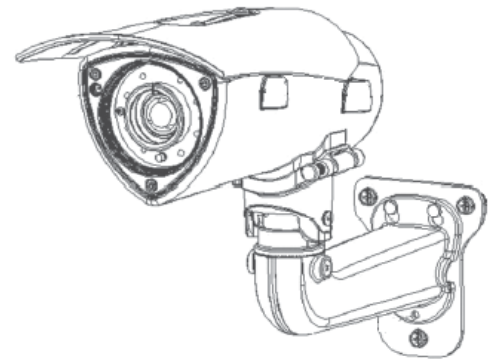
- Increased revenue collection
- Increased traffic throughput
- Determine exact duration of visit in case of lost ticket
- Enhanced customer satisfaction
- Efficient carpool management
- Reduced CO₂ in garage

Greater Security

- Decrease Fraud Attempts
- Create blacklist of license plate numbers to automatically trigger system alerting the operator via mobile device or control screen
- Various notifications for security or VIP

Operator Assist Tool

- Tool to help operator determine action when ticket inserted at the Exit Station does not match vehicle.
- Ticket is held in Exit Verifier and customer cannot retrieve ticket or proceed with further action while a message is sent to the operator who gets all the information about ticket and license plate to better inform a decision.
- Operator can bill violator and close the transaction properly.



MCE-30 Room Key Parking Access Encoder

TIBA's hotel solutions are seamless for Hotel managers and they are also ultra-convenient for ultimate hotel guest satisfaction. With the **Parking Access Encoder**, hotel guests can access the parking facility using their hotel guest room key, which is activated at hotel check-in to grant access through the parking lot entry or exit terminals.

At check-in, parking charges are added to the guest's folio. Once check-in has been completed, the front desk agent simply types in the room number and amount of nights into the parking access unit, then swipes to enable the key for parking privileges. No special interface between the parking system and the hotel property management system is needed. Tracking guest traffic is quick and easy via detailed traffic reports in the TIBA management software.

At the parking terminals, the guest will insert his room key. If room key is valid the gate will open and grant access in or out the lot.

The Smart-Hotel module provides detailed hotel guest transaction and summarized monthly usage reports. Future billing between hotel and the parking management is quick and easy.

In addition, reports can be exported into several formats such as: PDF, RTF, MS Excel etc.

Features*

- Motorized or manual encoding unit
- LCD Display
- Embedded industrial controller
- Operates as a stand-alone unit
- No communication line required



* Not all features are available or standard in all regions.
Check with your local sales person for availability.

MCE-30

Room Key Parking Access Encoder

Encoder Unit Measurements

177 mm (7") L x 177 mm (7") W
x 177 mm (7") H

Encoder Unit

Processor	Embedded industrial controller
Device Display	2 x 16 LCD display, standard
Operator Interface	4 x 4 keypad, standard
Housing	Rugged steel
Color	Dark Blue

Magnetizing Unit

Read/Write Card	Track 1, 2 or 3
Encoding Method	Motorized or Manual
User Indicators	Led signals
Media Type	ISO standard magnetic stripe cards, Hi-Co or Lo-Co



MP-30
Entry Station



MCE-30
Encoder



SW-30
Exit Station



Subject to design and functionality changes until product shipping.

Distributed by



1-800-236-0112
www.tapconet.com

5100 West Brown Deer Road
Brown Deer, WI 53223



MP-30 Ticket Dispenser

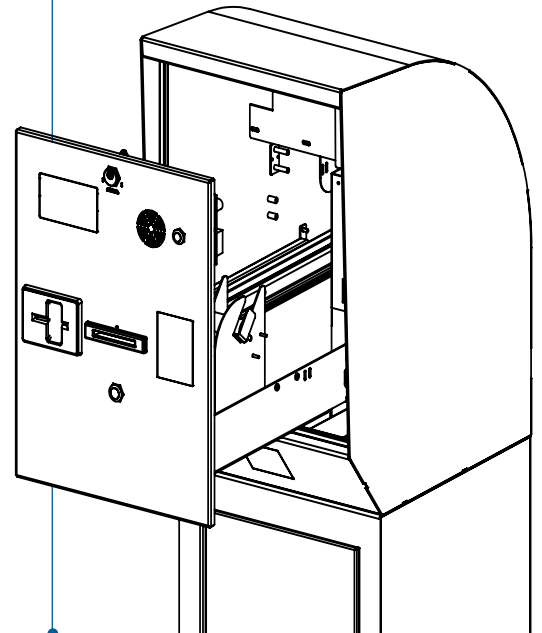
The **MP-30's** simple, modern device leaves a great first impression for your customer's initial encounter with your PARCS system.

The Entry Terminal is programmable for button or automatic ticket issue. Monthly customers can access the parking facility using a proximity card reader located on the dispenser's front panel. The system supports other customizable technologies upon request.

The interior device for the MP-30 is mounted on sturdy sliding tracks and glides open with just a pull, allowing for ultra-convenient maintenance. The unit can dispense up to 5,000 tickets and new consumables are easily reloaded.

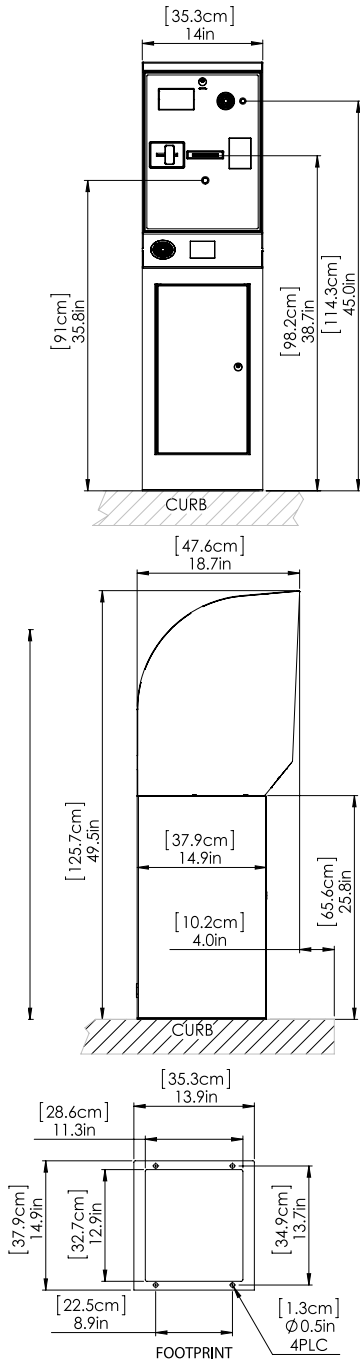
Features*

- Heavy duty thermal printer
- Loop detector
- TFT Color hi-res display
- Magnetic card reader for hotel guests, value card payments and credit card users
- Proximity Card Reader
- Stainless Steel housing
- Analog, digital or VOIP intercom
- Data line surge protector and heater
- Custom graphic panels



* Not all features are available or standard in all regions.
Check with your local sales person for availability.

MP-30 Ticket Dispenser



Features

Ticket issuing	Fast, on-the-fly barcode printing via heavy-duty thermal printer
Monthlies/Employees	Access via proximity card, magnetic stripe cards, AVI, barcode or keypad
Customer display	TFT color hi-res display
Intercom	Analog, digital or VOIP intercom
Data-Line surge protection	Built in
Hotel or value card reader	Supported
Heater	Supported

Operation

Processor	Embedded industrial controller
Communication & Network	RS-485 industrial communication or TCP/IP ethernet communication
Clock	Built in; backed up by lithium ion battery; keeps clock and data for up to 10 years
Monitoring	Transaction and all events monitored on TMS software in real time
Off-Line Operation	Full off-line mode enabled

Housing – Stainless Steel

Measurements	14" (35.3 cm) Width; 18.7" (47.6 cm) Depth; 49.5" (125 cm) Height
Weight	127 lbs. (57 kg)
Color (Housing)	Standard: White RAL 9010 Optional: Custom colors available
Locks	Device lock

Electrical

Voltage	100-240V AC 50-60 HZ
Current	5.3A max. with heater
Power Consumption	650W with heater
Operating Voltage	24V DC

Environment Conditions

Operating Temperature	-4° to 122° F (-20° to 50° C) with heater
IP Rating	54

Regulatory



Safety	<ul style="list-style-type: none"> • UL 60950-1:2007 • CAN/CSA-C22.2 No. 60950-1-07
EMC	<ul style="list-style-type: none"> • FCC Part 15, Subpart B, Class B • CE EMC



Subject to design and functionality changes until product shipping.

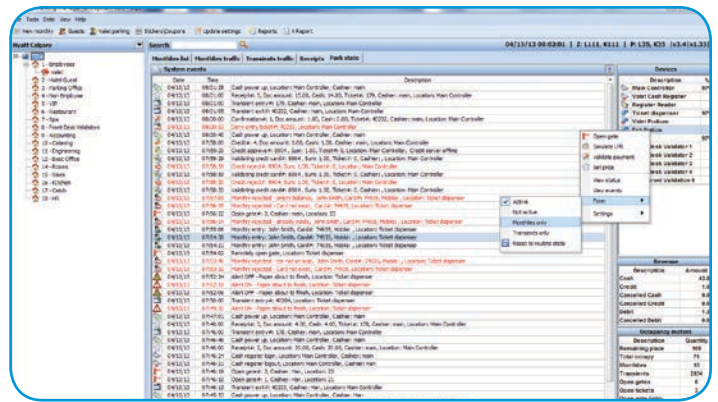
SmartPark Management Software

TIBA SmartPark incorporates everything that property owners and managers need in a facility management system. SmartPark is reliable, flexible and feature-rich and does not require frequent and costly upgrades to remain operational. The ultra-user-friendly software provides straightforward solutions to operational challenges and can be custom tailored for any type of property: office building, hotel, medical center or a mix-use development. Smartpark is a scalable product from a single facility to an entire city parking system.

SmartPark includes the following features:

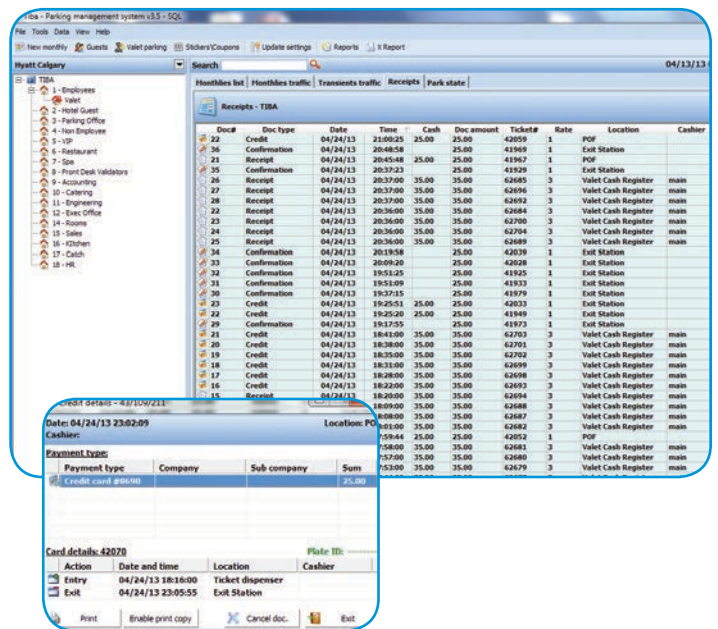
Monitoring and Control

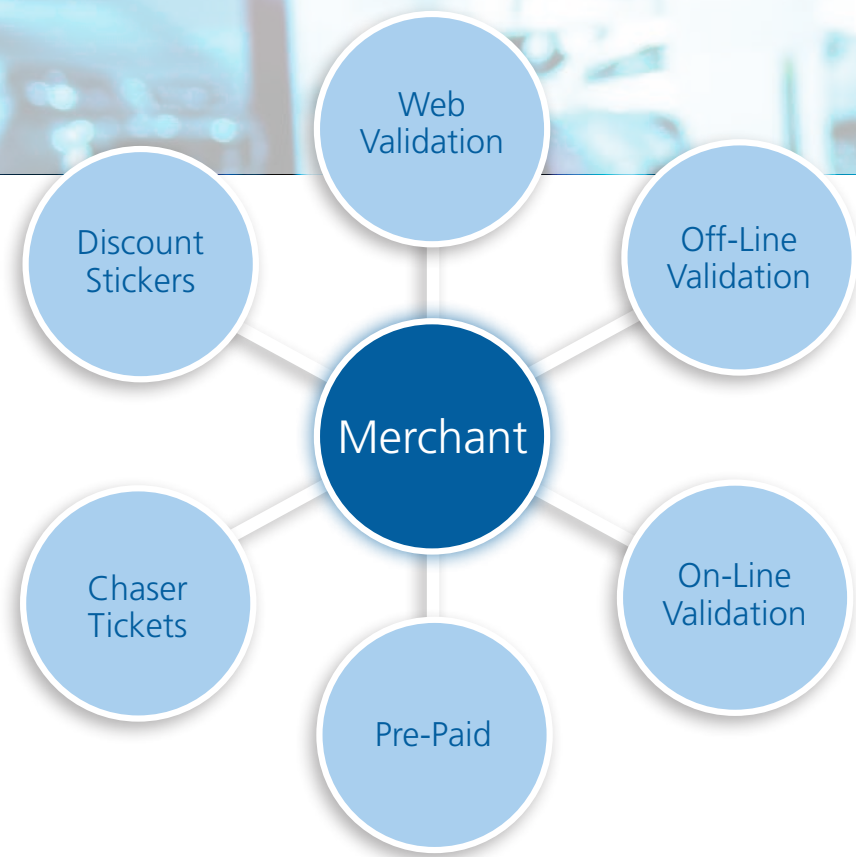
With Smartpark, operators can monitor and control all aspects of their facilities including occupancy, system alarms, VMS signs, equipment status, and lane traffic. They can also open/close barrier gates, restart lane equipment, or even send a new fee to a pay station. Additionally key facility personnel can receive email alerts and/or reports for virtually any system activity.



Revenue Management

Smartpark is your turn-key facility management solution including real time transactions, ticket tracking, occupancy counts, alarm monitoring, parking rate programming, coupons, validations, zone counts, sign controls and much more. From a single dashboard monitor system alarms, revenues transactions, equipment status, cardholder traffic, open tickets and facility occupancy. See it all locally, on the web and from your smartphone. Validation and coupon management and production is made simple cost effective with an integrated module that comes standard with Smartpark.





Validation Solutions

TIBA Smartpark offers a wide range of intelligent validation solutions. In Smartpark, merchant accounts and sub-accounts are created in the database. An unlimited amount of merchant accounts can be created in Smartpark. Additionally the validation types are created, i.e. one-hour free, \$1 discount. The validation types are created once and are available and can be utilized by any merchant account. After the validation profiles are created they are available for all applications including; barcode stickers, coupons (chaser tickets), QR codes, online desktop units, self-service units, off-line desktop units and for web client accounts.

Access Control

Parking access today requires a wide range of controls and billing options that provide owners and facility managers the flexible solutions to bring in new business. Smartpark is your enterprise parking access control solution. Whether it's a single, monthly contract account or an entire company, Smartpark provides intuitive access control management. Take advantage of the latest and greatest credential technologies such as LPR, AVI, QR and chip card, the choice is yours. Smartpark supports cardholder payments and value card re-charge at pay-on-foot stations in our standard product.

Standard Features:

- Debit/Value Card
- Tenant management
- Shared accounts
- Automatic activation
- Corporate accounts

New monthly

Save _Exit Save _New Exit Reports

First name: John Last name: Smith Card#: 86341 ID: []

Monthly details Personal info Vehicle details More settings Status info

Parking lot: TIBA Company: Employees Sub company: Valet

Job title: [] Begin: 4/30/2013 Category: [] End: 12/31/2015 Group: 201 - Access profile # Spot#: []

Profile: [] Purse balance: 345.00 No loop check [checked] Return card [] Pay on exit [] Without APB []

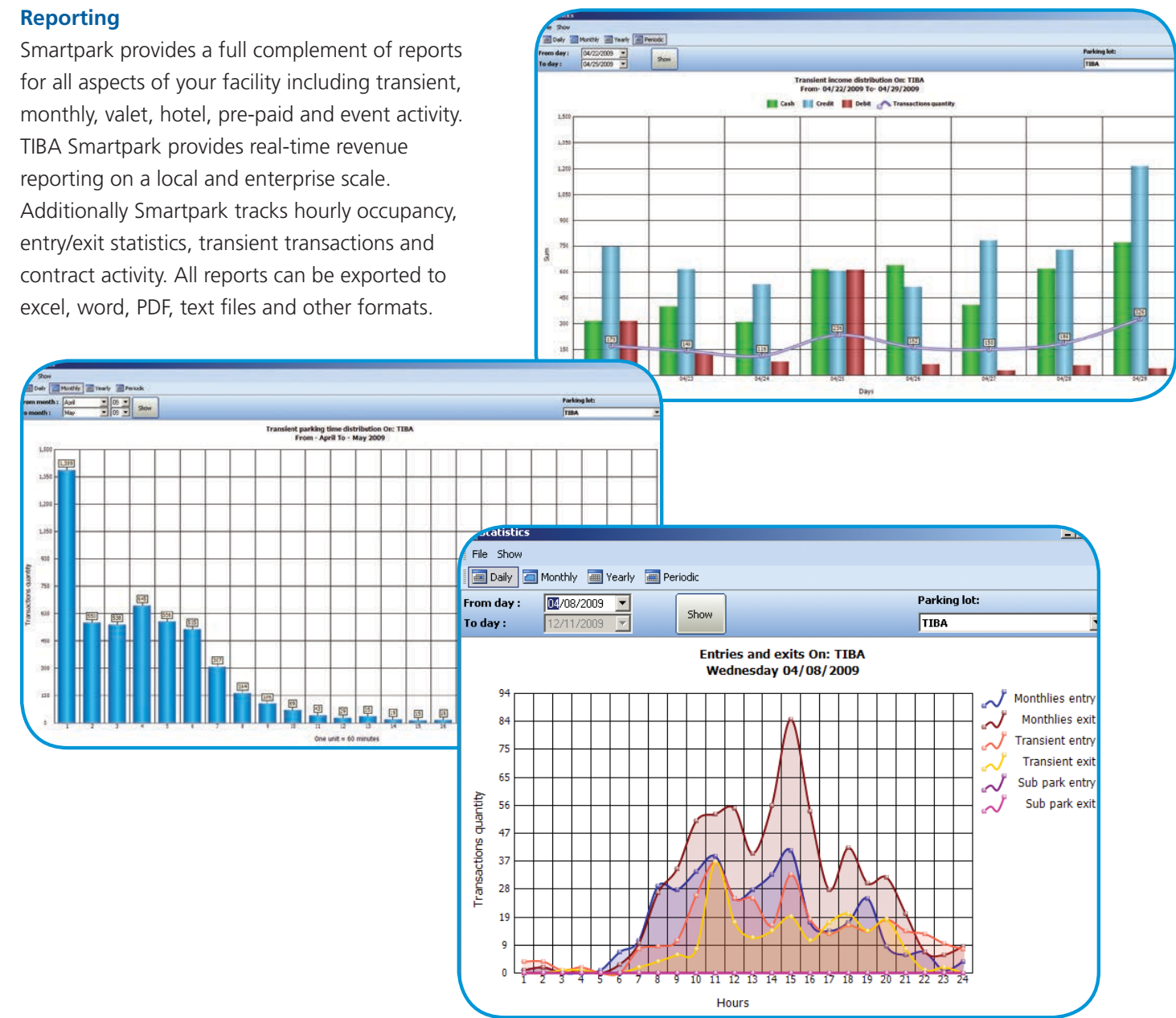
Type: Standard Month price: 400.00 Current balance: 0 Add units: 0

Price table: Prox Rate - 8

Mark as in the parking lot []

Reporting

Smartpark provides a full complement of reports for all aspects of your facility including transient, monthly, valet, hotel, pre-paid and event activity. TIBA Smartpark provides real-time revenue reporting on a local and enterprise scale. Additionally Smartpark tracks hourly occupancy, entry/exit statistics, transient transactions and contract activity. All reports can be exported to excel, word, PDF, text files and other formats.



Additional Modules



Valet Parking

SmartValet is your turn-key valet solution for; off-site valet parking, valet-assist within a garage and front door hotel applications. Smartvalet fully integrates valet parking and self-parking effectively and affordably. SmartValet tracks attendants, vehicles, revenue and overnight hotel guest parking.



Hotel Guest Solutions

HotelConnect is a seamless interface to the hotel property management system (PMS). The hotel authorizes parking at the front desk and insures that the guest is billed. The guest can then enter and exit the facility with their room key. TIBA also functions with the new RFID room keys.



LPR Systems

LPR Connect is your value added license plate recognition solution. LPR Connect is reliable, affordable and seamlessly integrates with Smartpark. LPR Connect is an excellent choice for airports, office buildings, shopping malls, mixed-use developments and universities.



Web Reservations

Pre-Paid parking reservations is one of fastest growing programs in the industry. Whether you use a pre-paid service or have your own ecommerce website. TIBA can seamlessly integrate pre-paid web reservations with a single TIBA PARCS system location or an entire city.



Loyalty Programs

TIBA's frequent parker program allows owners to give patrons reward points for utilizing their facility(s). The system is configurable to award points based on elapsed time or dollars spent in the facility. The Loyalty program is web based and is branded with your company information.



Pay-By-Phone

Metropolitan areas throughout North America are introducing Pay-By-Phone as a payment option for parking fees. TIBA puts this option in the owner's hands to keep up with the competition. Whether it's a pre-paid reservation or a central payment option, TIBA is the smart choice for Pay-By-Phone.



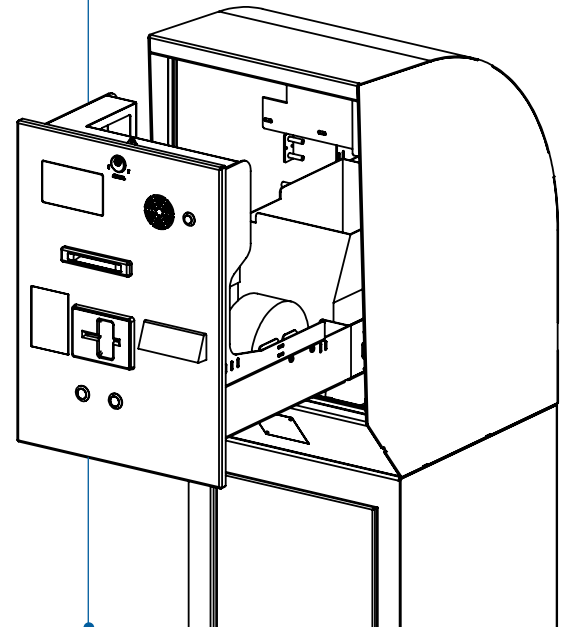
SW-30 Exit Verifier

The **Exit Verifier** is your patron's final encounter with your parking facility, so ease and reliability are of utmost importance. The SW-30 is the industry's most reliable ticket processing device, allowing effortless exiting for your customers while maintaining the security of your system. Customers can either insert their tickets paid at an Automatic Pay Station or can Pay-at-Exit via credit card. The system also recognizes validations by stickers and vouchers. Patrons can print receipts from the built in printer for further ease of use. The interior device is mounted on sturdy sliding tracks which glide open with just a pull, allowing for easy maintenance and ticket retrieval.

The Exit Verifier also has an option for a built in intercom system and a proximity card reader which permits monthly customers to exit with a simple wave of their card. As most other TIBA devices, the SW-30 is constructed from rugged stainless steel.

Features*

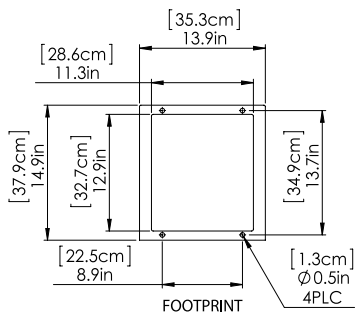
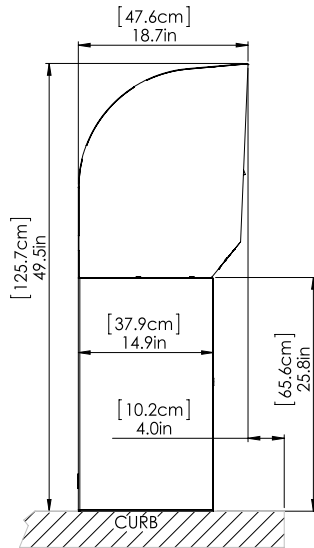
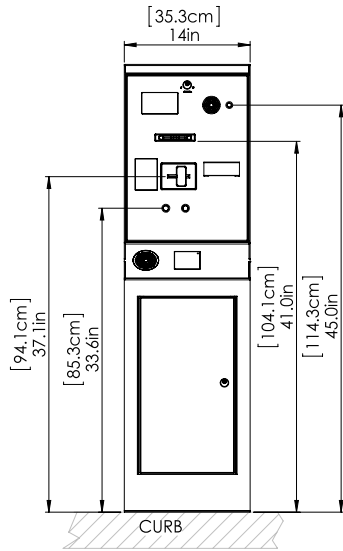
- Motorized Barcode reader to scan and process tickets
- TFT Color hi-res display
- Loop detector
- EMV compatible with dual interface for chip and magnetic stripe cards for credit card payment
- Magnetic card reader for hotel guests, value cards and credit card users
- Proximity card reader
- Analog, digital or VOIP intercom
- Stainless steel housing
- Dataline surge protector and heater
- Custom graphic panels



ATLANTA, GEORGIA U.S.A.
5126 South Royal Atlanta Drive
Tucker, Georgia 30084
U.S.A.
770.491.7586 Phone
770.934.3384 Fax
www.tibaparking.com

* Not all features are available or standard in all regions.
Check with your local sales person for availability.

SW-30 Exit Verifier



Features

Ticket Verifier	Motorized barcode scanner
Monthlies/Employees	Access via proximity card, magnetic stripe cards, AVI, barcode or keypad
Credit Card Reader	Supported
Receipt Printer	Supported
Single Channel Loop Detector	Supported
Customer Display	TFT Color hi-res display
Intercom	Analog, digital or VOIP intercom
Surge Protection	Built in data-line surge protector
Hotel or Congress Ticket	Optional

Operation

Processor	Embedded industrial controller
Communication & Network	RS-485 industrial communication or TCP/IP ethernet communication
Clock	Built in, backed up by lithium ion battery; keeps clock and data for up to 10 years
Off-Line Operation	Full off-line mode enabled
Management Monitoring	Transaction and all events monitored on-line

Housing – Stainless Steel

Measurements	14" (35.3 cm) width; 18.7" (47.6 cm) depth; 49.5" (125 cm) height
Weight	127 Lbs. (57 KG)
Color (Housing)	Standard: White RAL 9010 Optional: Custom colors available
Locks	Two separate locks for maintenance and to empty ticket container

Electrical

Voltage	100-240V AC 50-60 HZ
Current	5.3A max. with heater
Power Consumption	650W with heater
Operating Voltage	24V DC

Environmental Conditions

Operating Temperature	-4° to 122° F (-20° to 50° C) with heater
IP Rating	54

Regulatory



- Safety • UL 60950-1:2007
• CAN/CSA-C22.2 No. 60950-1-07
- EMC • FCC Part 15, Subpart B, Class B
• CE



Subject to design and functionality changes until product shipping.

Distributed by



1-800-236-0112
www.tapconet.com

5100 West Brown Deer Road
Brown Deer, WI 53223



TMS-svs

Smart Validation System

TIBA Parking offers the best solution in the parking industry for parking ticket validation. Barcode based validation labels are created on-the-fly using the parking management software.

Unlimited events can be associated to many different merchants or user groups. Each event can be set with its own individual validation. Validations can be generated by different users or by the permitted user only.

The Smart Validation System offers a huge variety of validations, such as – *Flat rate, discounted rate, hours discount, percentage discount, special pricelist assign and more...*

Validations are created on standard label sheets, which are printed in a standard laser printer. The validation label is simply placed on the parking ticket. Special equipment is **NOT** required to create validations.

All parking devices in the lot recognize the validation, calculate the new parking fee and update the balance accordingly.

TIBA's parking management software - TMS is once again setting new standards when it comes to user friendliness.



TMS-svs

Smart Validation System

Validation features

- Assign a validation type from a selection of Flat rate, discounted rate, hours discount, percentage discount, special pricelist assign and more...
- Activate validations between certain dates & time.
- Activate validations for certain days of the week.
- Assign a special agreement rate for future merchant billing, as a pre-defined rate or a special merchant pricelist.
- Design your validation labels differently for each event.

Validations creation session

Full control.

Real-time validation monitoring is easily done for all validations that are created and/or used. Modify, change or terminate existing validation at any time.

#	Batch	Quantity	Use	Company	Produce by	Produce date	Valid from	Valid to
111	Loss Prevention Direct...	20	1	Events	System admin	08/19/09 10:59	08/19/09 00:00	08/20/09 23:59
110	HOMELAND SECURITY	20	0	Events	System admin	08/18/09 10:04	08/18/09 00:00	08/20/09 23:59
109	PIA	200	138	Events	System admin	08/13/09 16:47	08/13/09 00:00	08/16/09 23:59
107	Cheerleading Camp	600	8	Events	System admin	08/12/09 09:31	08/13/09 00:00	08/21/09 23:59
106	Ceola-Helo Dinner	50	0	Events	System admin	08/11/09 18:00	08/15/09 00:00	08/16/09 23:59
105	MedTronic	15	0	Events	System admin	08/10/09 18:48	08/10/09 00:00	08/11/09 23:59
104	ECRM	20	7	Events	System admin	08/10/09 11:06	08/10/09 00:00	08/11/09 23:59
103	SONY ERICSSON	40	8	Events	System admin	08/08/09 11:23	08/12/09 00:00	08/13/09 23:59
102	SONY ERICSSON	40	0	Events	System admin	08/08/09 11:21	08/12/09 00:00	08/13/09 23:59
101	SONY ERICSSON	40	0	Events	System admin	08/08/09 11:18	08/08/09 00:00	08/07/10 23:59
100	MAITE'S BABY SHOWER	40	21	Events	System admin	08/08/09 11:08	08/08/09 00:00	08/09/09 23:59
99	HERNANDEZ WEDDING	60	0	Events	System admin	08/07/09 15:58	08/10/09 00:00	08/14/09 23:59
98	August Dinner	14	14	Managment	System admin	08/04/09 20:51	08/01/09 00:00	09/01/09 23:59
95	Steve's Graduation	50	6	Events	System admin	07/30/09 20:29	08/01/09 00:00	08/03/09 23:59
94	SONY ERICSSON	40	0	Events	System admin	07/30/09 11:07	08/04/09 00:00	08/05/09 23:59
93	SANOPI GROUP	2	2	Events	System admin	07/30/09 09:05	07/30/09 00:00	07/30/09 12:00
92	HERBALIFE	550	37	Events	System admin	07/23/09 20:20	07/24/09 00:00	07/26/09 23:59
91	Executive Meeting	14	14	Events	System admin	07/23/09 08:30	07/23/09 00:00	07/24/09 23:59
90	Intl. Talent Showcase	400	98	Events	System admin	07/22/09 09:35	07/23/09 00:00	08/04/09 23:59
89	Stacy's Quince Rehearsal	20	17	Associates	System admin	07/20/09 14:34	07/21/09 00:00	07/23/09 23:59
87	American Medical	8	8	Events	System admin	07/15/09 10:51	07/16/09 00:00	07/18/09 23:59
85	Burger King	55	55	Events	System admin	07/14/09 18:18	07/14/09 00:00	07/19/09 23:59
82	Burger King	247	247	Events	System admin	07/11/09 08:41	07/11/09 00:00	07/18/09 23:59
81	Zo's Summer Groove	24	24	Events	System admin	07/07/09 10:37	07/07/09 00:00	07/09/09 23:59
80	Tail Activewear	5	5	Events	System admin	07/07/09 10:30	07/07/09 00:00	07/09/09 23:59

Main validations screen displays batch, quantities, users and dates



TMS-svs

Smart Validation System

Reporting

The Validation system provides detailed audit reports of validation usage. Future billing of merchants is quick and easy.

Summarized reports show you exactly how much to bill the merchant.

In addition, reports can be exported into several formats such as: PDF, RTF, MS Excel etc.

Pages view										
Parking lot: TIBA Parking							01/15/2009 3:07:15 PM			
Detailed sticker use report										
111										
Events										
Batch: John's Wedding - \$3.00 FLAT RATE, Produce date: 05/14/10 10:17:35, Profile: 21-Fix \$3										
Z#	Doc#	Sticker#	Ticket#	Entry time	Payment/Exit time	Units	Doc amount	Discount amount	Debit	Cancelled
393	7	38633	86538	05/17/10 06:44	05/17/10 13:09	7	10.00	7.00	2.00	
393	7	38634	44658	05/17/10 06:30	05/17/10 15:48	10	12.00	9.00	2.00	
393	19	38635	44667	05/17/10 06:53	05/17/10 13:20	7	10.00	7.00	2.00	
393	7	38637	44668	05/17/10 06:53	05/17/10 13:31	7	10.00	7.00	2.00	
393	12	38646	86535	05/17/10 06:32	05/17/10 13:54	8	10.00	7.00	2.00	
393	10	38647	44682	05/17/10 07:11	05/17/10 12:49	6	8.00	5.00	2.00	
393	26	38648	44680	05/17/10 07:08	05/17/10 14:22	8	10.00	7.00	2.00	
393	6	38651	86542	05/17/10 07:10	05/17/10 12:50	6	8.00	5.00	2.00	
393	17	38656	44694	05/17/10 07:20	05/17/10 13:12	6	8.00	5.00	2.00	
393	5	38660	86537	05/17/10 06:34	05/17/10 12:25	6	8.00	5.00	2.00	
393	18	38665	44708	05/17/10 07:41	05/17/10 13:13	6	8.00	5.00	2.00	
393	9	38668	86543	05/17/10 07:18	05/17/10 13:33	7	10.00	7.00	2.00	
393	23	38673	86574	05/17/10 11:48	05/17/10 18:35	7	10.00	7.00	2.00	
393	70	38692	44814	05/17/10 12:03	05/17/10 18:27	7	10.00	7.00	2.00	
393	56	38703	44808	05/17/10 11:54	05/17/10 17:44	6	8.00	5.00	2.00	
393	24	38709	44773	05/17/10 10:49	05/17/10 14:11	4	6.00	3.00	2.00	
393	27	38710	44788	05/17/10 11:25	05/17/10 14:45	4	6.00	3.00	2.00	
Total stickers: 17							152.00	101.00	34.00	
Total Company							152.00	101.00	34.00	

Detailed reporting of validation usage

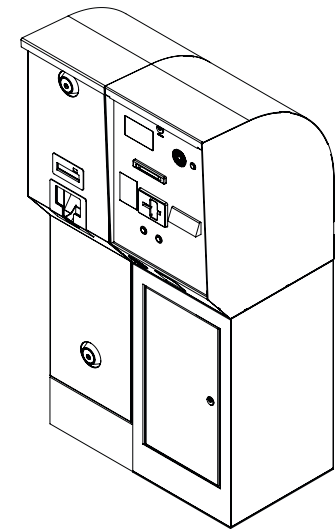
VPS-30 Vehicle Pay Station

With TIBA's **Vehicle Pay Station**, patrons can scan or pay before exiting in a simple and seamless automated parking experience. The VPS-30 has options for an EMV-compatible chip terminal, contactless card reader and magnetic card reader for easy credit card payment. Additionally, the device accepts and dispenses bills and prints receipts. Maximize revenue with the option to pay in lane and collect fees around the clock.

As with all TIBA equipment, maintaining VPS-30 is simple and straightforward. Cash sits in a separate housing, so staff can perform routine maintenance while only the manager has access to cash.

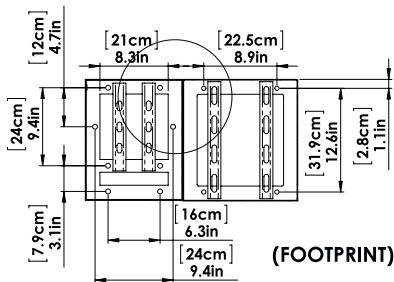
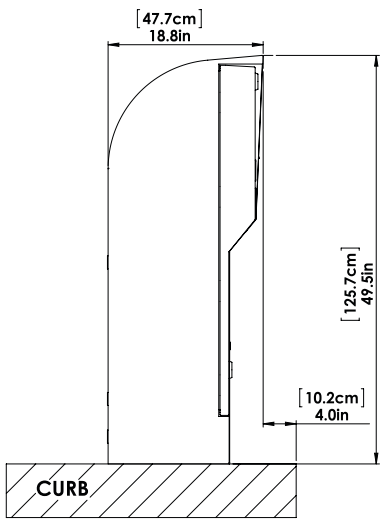
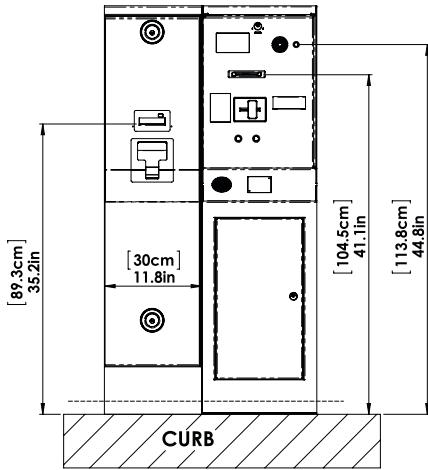
Features*

- Motorized Barcode reader to scan and process tickets
- 2 or 3 denomination bill dispenser
- EMV compatible with dual interface for chip and magnetic stripe cards for credit card payment
- Receipt printer
- Proximity reader for monthly parkers
- TFT Color hi-res display
- Loop detector
- Analog, Digital or VOIP Intercom
- Stainless steel housing
- Data line surge protection and heater



* Not all features are available or standard in all regions.
Check with your local sales person for availability.

VPS-30 Vehicle Pay Station



Features

Ticket Verifier	Motorized barcode scanner
Monthlies/Employees	Access via proximity card, magnetic stripe cards, AVI, or key pad
Credit Card Reader	Supported
Receipt Printer	Supported
Bill Acceptor	Bills are read all four ways
Bill Dispenser	Returns change in two or three different banknotes
Heater	Supported
Loop Detector	Supported
Customer Display	TFT color hi-res display
Intercom Substation	Analog, digital or VOIP intercom
Surge Protection	Built in data-line surge protector
Hotel or Congress Ticket	Optional

Operation

Processor	Embedded industrial controller
Communication & Network	RS-485 industrial communication or TCP/IP ethernet communication
Clock	Built in; backed up by lithium ion battery; keeps clock and data for up to 10 years
Off-Line Operation	Full off-line operation capability
Monitoring	Transaction and all events monitored on TMS software in real time

Housing – Stainless Steel

Measurements	25.6" (65 cm) width; 18.7" (47.4 cm) depth; 49.6" (126.1 cm) height
Weight	230 lbs. (104 kg)
Color (Housing)	Standard: White RAL 9010 Optional: Custom colors available
Locks	Individual locks for cash unit, verifier unit and ticket retrieval door.

Electrical

Voltage	100-240V AC 50-60 HZ
Current	12.5A max. with heater
Power Consumption	1486W with heater
Operating Voltage	12V, 24V DC

Environment Conditions

Operating Temperature	-20° to 50°C (-4° to 122° F) with heater
-----------------------	--

Regulatory



Safety	<ul style="list-style-type: none"> • UL 60950-1:2007 • CAN/CSA-C22.2 No. 60950-1-07
EMC	<ul style="list-style-type: none"> • FCC Part 15, Subpart B, Class B • CE



Subject to design and functionality changes until product shipping.