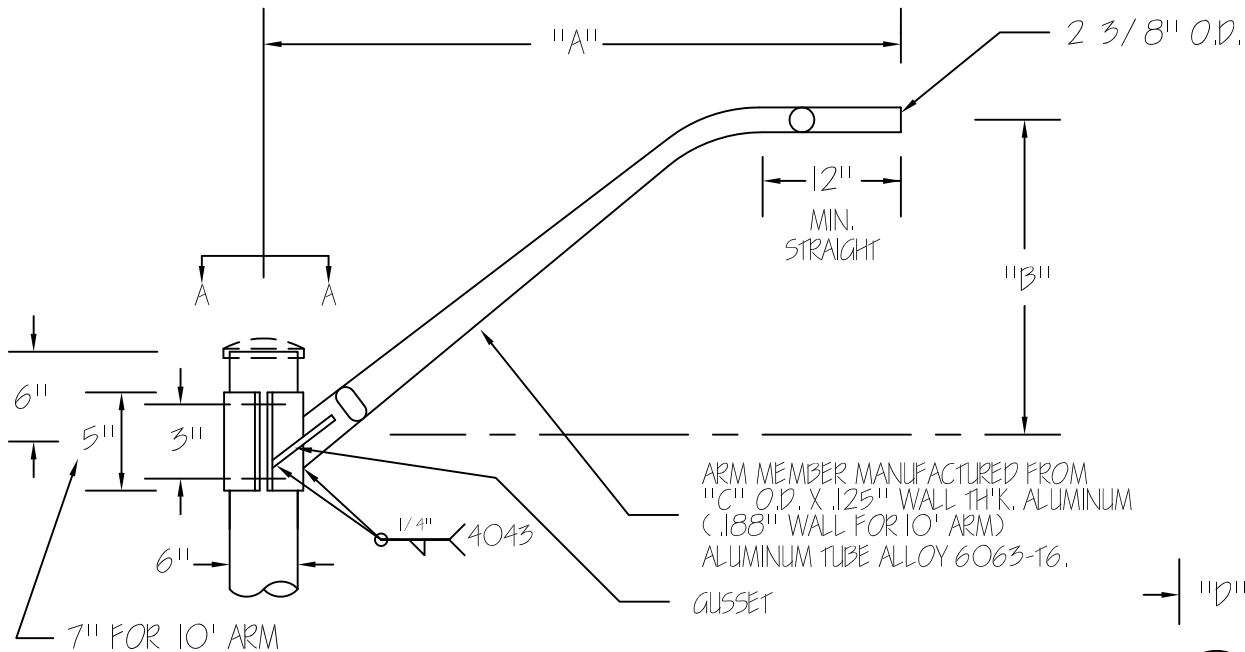


ELLIPTICAL CLAMP-ON SINGLE
MEMBER ARM FOR 6" TOP DIA.
ALUMINUM POLES

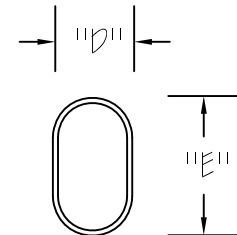
SCHEDULE

CATALOG #	ITEM	QTY.	A	B	C	D	
FPEA352375-4-30-6.OC-WISDOT			4'	2'-6"	3 1/2"	2 3/8"	4 1/4"
FPEA352375-6-30-6.OC-WISDOT		-	6'	2'-6"	3 1/2"	2 3/8"	4 1/4"
FPEA42375-8-30-6.OC-WISDOT		-	8'	2'-6"	4"	2 1/2"	4 7/8"
FPEA42375-10-30-6.OC-WISDOT		-	10'	2'-6"	4"	2 1/2"	4 7/8"

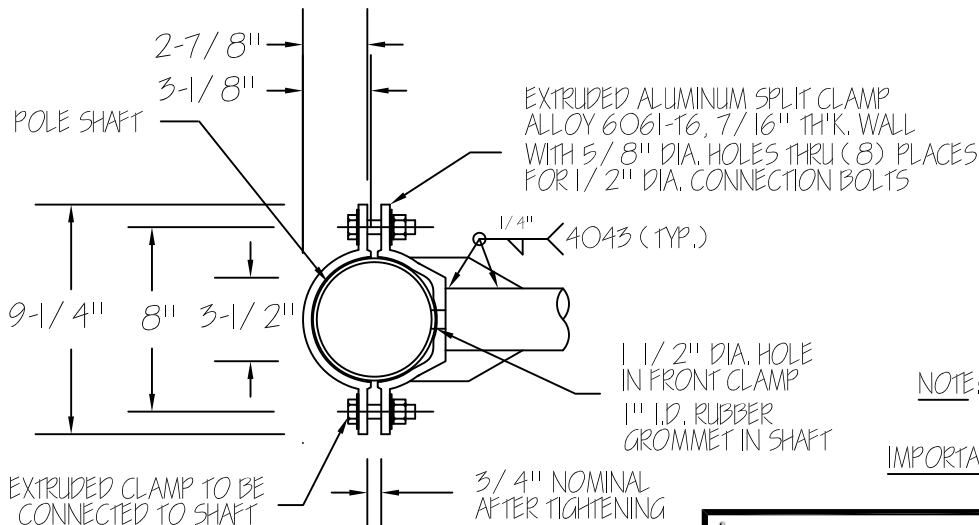


ARM MEMBER MANUFACTURED FROM
"C" O.D. X .125" WALL TH'K. ALUMINUM
(.188" WALL FOR 10' ARM)
ALUMINUM TUBE ALLOY 6063-T6.

GUSSET



CROSS-SECTION OF
ARM AT PLATE



EXTRUDED ALUMINUM SPLIT CLAMP
ALLOY 6061-T6, 7/16" TH'K. WALL
WITH 5/8" DIA. HOLES THRU (8) PLACES
FOR 1/2" DIA. CONNECTION BOLTS

1/4" <4043 (TYP.)

1 1/2" DIA. HOLE
IN FRONT CLAMP
1" I.D. RUBBER
GROMMET IN SHAFT

3/4" NOMINAL
AFTER TIGHTENING

EXTRUDED CLAMP TO BE
CONNECTED TO SHAFT
W/ 1/2"-13NC x 3" LONG
HEX HEAD CAP SCREWS W/
FLATS, LOCKS, NUTS - ALL
ST. ST'L. 18-8

SECTION "A-A"

NOTE: THIS ARM CLAMPS TO 6" O.D. TOP
ALUMINUM LIGHT STANDARDS ONLY.

IMPORTANT NOTE: DO NOT INSTALL THIS
ARM WITHOUT LUMINAIRE.

HARDWARE REQUIRED
W/ EA. ARM ASSEMBLY

4-1/2" DIA. BOLTS
8-1/2" DIA. FLATS
4-1/2" DIA. LOCKS
4-1/2" DIA. NUTS

REVISIONS

NO.	DATE	BY	DRAWN BY	SAF	DATE	12/2/14	MATERIAL	AS NOTED
1			CHK'D		APP'D		DRAWING NO. 12973	
2			SCALE	NONE	WORK ORDER #	47385		



95 GNARLED HOLLOW RD.
EAST SETAUKET, N.Y.
11733



TUBULAR PRODUCTS, INC.