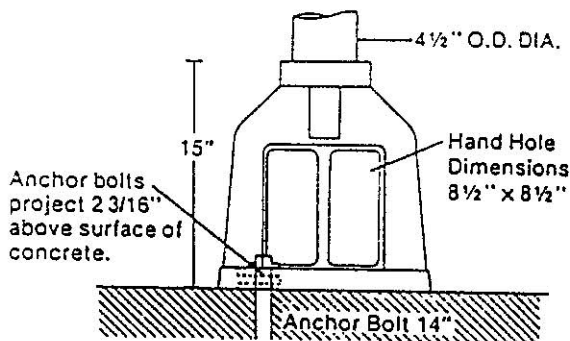
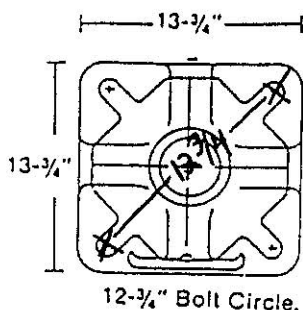


PEDESTAL BASES AND PIPES



PEDESTAL PIPE

Pedestal lengths are available from 1-1/2' to 16'. Specify length less base. The pedestal pipes are Cleaned of all mill scale, oil and foreign material And are NOT painted.

Traffic signal standards shall be aluminum alloy 6061-T6 manufactured in accordance with ASTM B-429 schedule 80.

PEDESTAL BASE

The TP-358 series of pedestals is used for mounting traffic signals, flasher assemblies or traffic control equipment. The pedestal assembly is arranged to mount on a concrete base attached by four internal anchor bolts imbedded in the base.

The square cast aluminum base is manufactured from a medium high strength alloy #356. A large 8-1/2" square hand hole cover allows access to the interior of the base for ease of cable splicing and anchor bolt attachment. The door is secured to the base by a 1/4"-20" x 3/4" screw (others available). Available unpainted or with Federal Highway Yellow oven baked finish or color of your choice.

This TAPCO pedestal base is to the best of our knowledge the first designed in accordance with the 1985 AASHTO Specification for the Design and Construction Of Structural Supports for Traffic Signals, Signs, Highway Lighting, together with a wind velocity of 80 miles per hour plus gust factor.

These standards and tests for compliance Were developed by the Wisconsin Department Of Transportation.

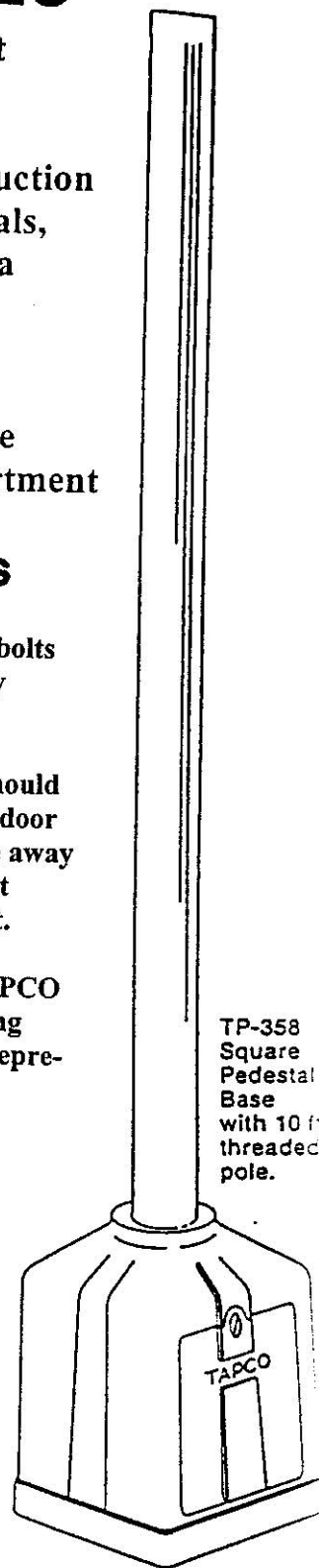
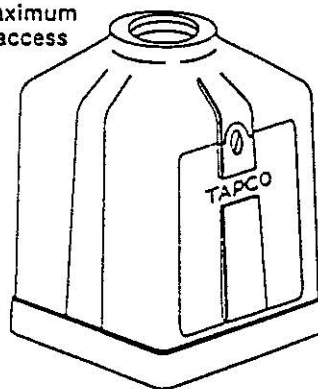
ANCHOR BOLTS

3/4" diameter x 14" long machine bolts (galvanized) available standardly (others available).

The positioning of anchor bolts should be such that the hand hole access door is conveniently located on the side away from the curb. Full size, blue print templates are available on request.

For additional information on TAPCO line of pedestals and pole mounting hardware, contact your TAPCO representative.

TP-358-3A Square Pedestal Base provides maximum Hand Hole access for splicing and cable handling.



SIGNAL SALES • SERVICE SUPPORT

5100 W. Brown Deer Rd., Brown Deer, WI 53209
Phone: 262-814-7000 Fax: 414-354-5480
Toll-Free: 800-236-0112 Toll-Free Fax: 800-444-0331
tapconet.com

TAPCO'S
Bases & Pipes
Are In Stock For
Immediate Delivery!