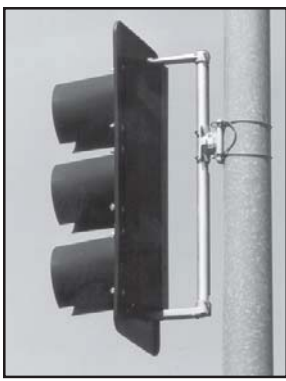




Astro-Brac[®]

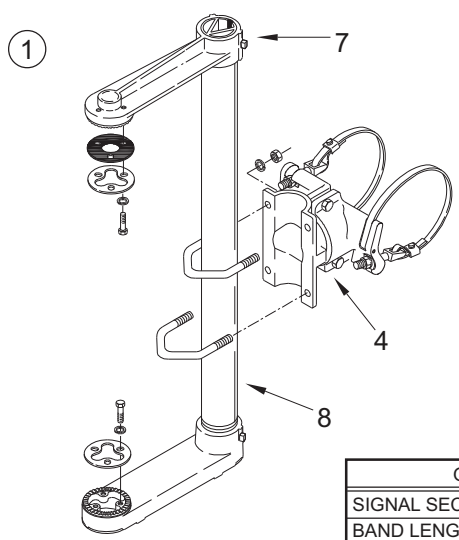
1-Way Bracket Assemblies



The Astro-Brac in its various configurations is a truly universal system for mounting signals.

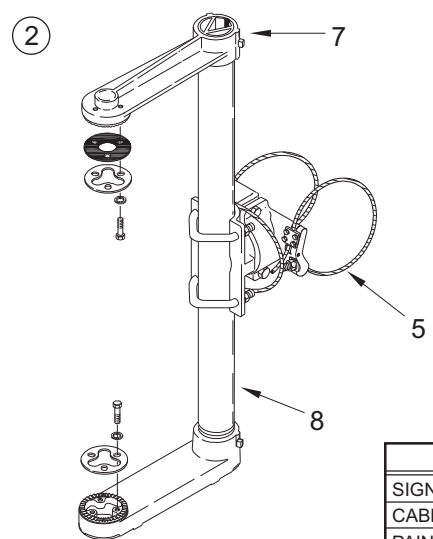
The Astro-Brac is designed to facilitate the mounting of any size or combination of signals to any size of mast arm or pole. This complete adjustability is not possible with other types of rigid mountings.

ITEM	DESCRIPTION	PART NO.
ASTRO-BRAC ASSY, Stellar Series:		
①	1-Way Band Mount	AS-0116
②	1-Way Cable Mount	AS-0125
③	1-Way Tenon Mount	AB-0137
ASTRO-BRAC CLAMP KIT:		
4	Band Mount, Stellar Series	AS-3004
5	Cable Mount, Stellar Series	AS-3009
6	Tenon Mount	AB-3010
7	ARM KIT, 8½" CTC	AB-4000
8	GUSSETED TUBE, w/ Vinyl Insert, 1½" Alum TOE	AB-2003

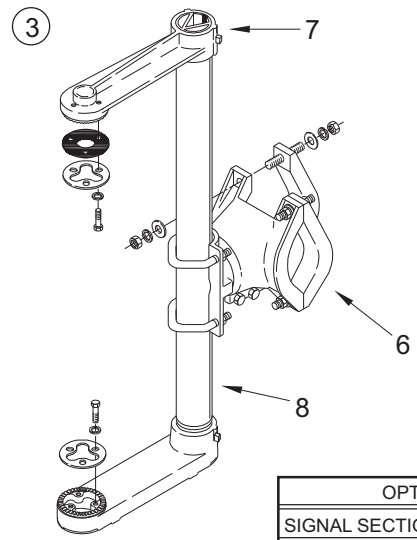


OPTIONS
SIGNAL SECTION: 1, 2, 3, 4, or 5
BAND LENGTH: 29", 36", 42", 48", or 56"
STAINLESS UPGRADE
PAINT

- Notes:**
1. All assemblies are supplied standard with stainless fasteners and natural aluminum alodine coating. Stainless upgrade to include stainless steel clamp screw where applicable.
 2. See pages T1-8 thru T1-14 for clamp kit pole diameter options.
 3. Please specify options when ordering.



OPTIONS
SIGNAL SECTION: 1, 2, 3, 4, or 5
CABLE LENGTH: 62", 84", or 96"
PAINT



OPTIONS
SIGNAL SECTION: 1, 2, 3, 4, or 5
PAINT

SPECIFICATION – MAST ARM MOUNT SIGNAL BRACKET 1-WAY STAINLESS STEEL BAND MOUNT



BRACKET SPECIFICATIONS:

1. **ADJUSTABILITY:** The bracket shall be completely adjustable such that it combines all four (4) of the adjustments indicated above as A through D.
2. **ATTACHMENT:** The bracket shall be provided with type 201 Stainless Steel Band to fasten the bracket to the supporting arm or structure. The bracket shall be easily adjustable to fit all sizes of round, octagonal, elliptical or other shaped structure without special tools or equipment.
3. **SIGNAL ACCOMMODATIONS:** The bracket shall attach to the signal in a clamping manner holding the signal both top and bottom in order to assure maximum rigidity. A standard bracket (Figure 1) shall accommodate all major signal manufacturer's signals from a three (3) Section 1-Way (inline) 8" and 12" Signal through a five (5) Section 1-Way 12" Signal and any combination thereof including 3M and ICC configurations.
4. **WIRING:** All electrical wiring shall be completely concealed within the bracket. The vertical support shall be a gusseted "C" shaped extruded aluminum tube to accommodate the signal cable regardless of vertical positioning of the tube.
5. **MATERIAL & DESIGN:**

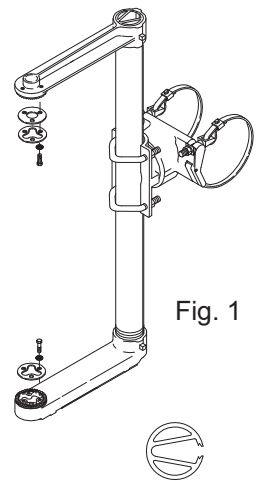


Fig. 1



Section "A-A"

- A. **UPPER & LOWER ARMS:** Shall be cast from 319 aluminum or equivalent. The lower bracket arm shall be internally threaded to accommodate the threaded vertical support tube. The lower arm shall be furnished with ABS plastic covers which will slide and snap into position without the use of fasteners or tools. All upper and lower arms shall have 72 tooth serrations cast into the arm to assure a positive lock with signal housing and shall be secured about their rotational axis with setscrews. Both upper and lower arms shall have a tri-bolt arrangement for attachment to the signal housing. Opening in the lower arm shall accommodate a minimum of 3, 12 conductor 14 gauge cables.
 - B. **VERTICAL SUPPORT TUBE:** Shall be a double gusseted tube extruded from 6063-T6 aluminum alloy and have a cross section as shown in Section "A-A". Each tube shall be complete with a Vinyl Closure Strip and be threaded on one end to accommodate the lower arm assembly.
 - C. **MAST ARM CLAMP ASSEMBLY:** Both male and female halves shall be cast from 713 aluminum alloy or equivalent. The male clamp half shall be secured within the female half, utilizing a spring steel retainer ring. Such assembly shall provide an unobstructed center of 2 3/8" minimum diameter, allowing for 360 degree rotation of the clamp assembly. There shall be no internal cross bracing assembly obstructing the center opening.
 - D. **MAST ARM CLAMP ASSEMBLY:** Shall be equipped with two (2) stainless steel bands, 5/8" wide, 0.045" thick and 29" long. Stainless steel bands shall have a minimum tensile strength of 100,000 PSI. A setscrew secured buckle shall be utilized in securing the band.
 - E. **CLAMP SCREW:** For attaching the stainless bands to the clamp kit. Shall be a 7/16"-14 x 3" one piece unit drop forged from C-1045 carbon steel or 316 stainless steel with a minimum tensile strength of 80 KSI. Shall be formed with a slot sized to accept a 5/8" band.
 - F. **HARDWARE:** Each bracket shall be complete with all necessary bolts, washers, gaskets, etc. to allow assembly of the signal to the bracket and the bracket to the mast arm.
6. **FINISH:**
 - A. All aluminum parts shall have an Alodine (or equivalent) finish.
 - B. All non-stainless steel parts shall have a yellow zinc di-chromate or galvanize finish.