

2013 EVENT PROGRAM

ANNUAL TAPCO TRAINING SHOWCASE

Wednesday, October 23rd
8:00 a.m. – 4:00 p.m.



We are excited to welcome you to the 2013 Annual TAPCO Training Showcase and proud to announce the addition of professional development hours this year. Our goal for this event is to create an environment that cultivates ideas and encourages industry growth.

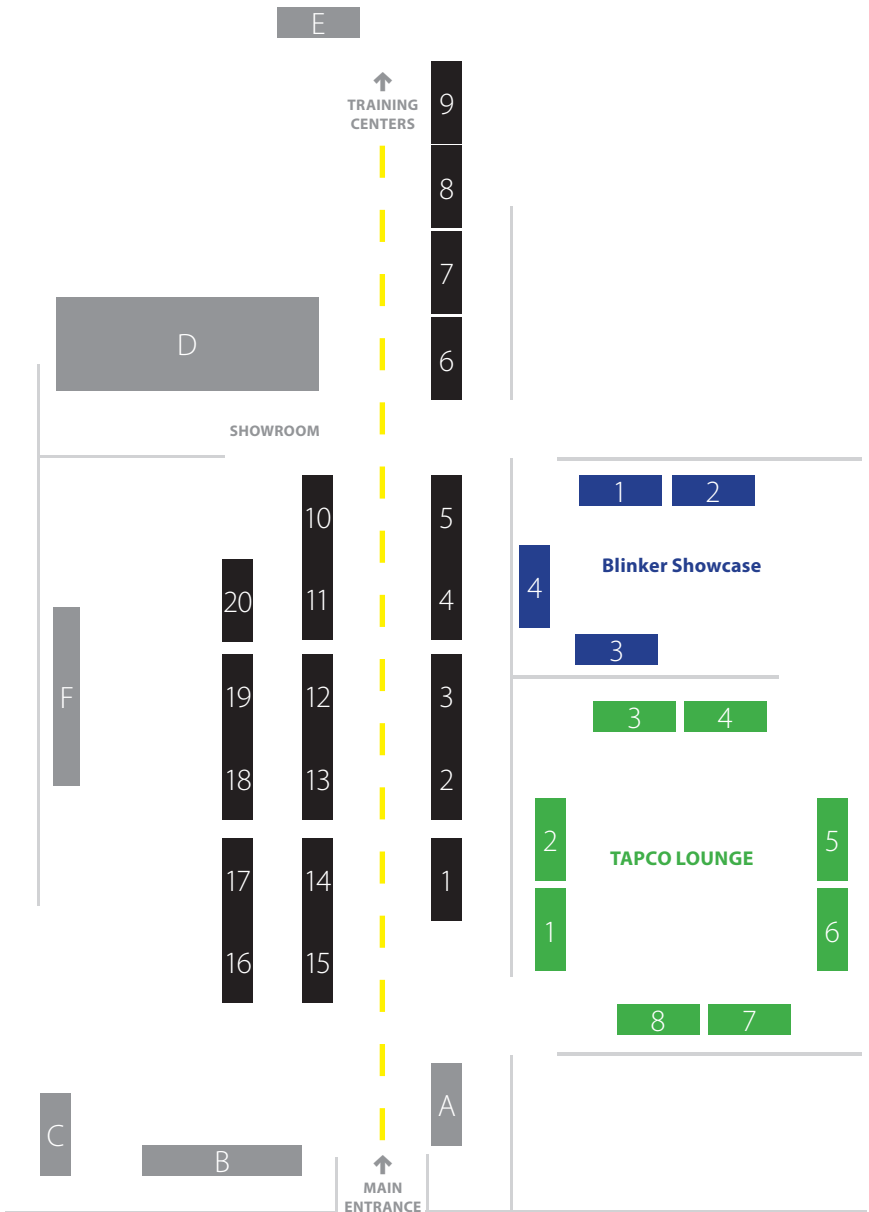
An environment where you are able to network with partners from around the world. A place to share feedback and gain the knowledge necessary for professional development. As well as provide a common meeting point for industry leaders to speak about current topics, industry news and trends.



Vendor map	2-3
Vendor Information	4-9
Guided Tour Map	10-11
National Work Zone Memorial	12-13
Schedule of Events	14
Speaker Biographies	15-25
General Information	26-27
PDH Checklist	28 -29



Vendors Map



SHOWROOM

1. Impact Recovery Systems
2. Axis Communications
3. Iteris
4. Encom Wireless
5. trafficnow
6. Quick Pay
7. 3M
8. Alpha Technologies
9. Siemens
10. Dialight
11. MS Sedco
12. Eberle Design Inc.
13. Trans-Tech
14. Trynex International
15. Graco
16. Earthcam
17. Work Area Protection
18. Nucor
19. Pexco
20. MDI

TAPCO LOUNGE

1. Astro Optics
2. Total Security Warehouse
3. TAPCO - Parking
4. TAPCO - Signal
5. TAPCO - StreetScape
6. Lumecon
7. TAPCO - V-Loc[®]
8. TAPCO - Digital

Blinker Showcase

1. TAPCO - BlinkerSigns
2. TAPCO - BlinkerSigns
3. TAPCO - BlinkerRadar[®]
4. TAPCO - BlinkerRadar[®]

General

- A. Registration
- B. Food Station
- C. Beverage station
- E. Beverage Station
- F. ATSSA Memorial

Showroom Vendors

Impact Recovery Systems > [Showroom Booth 1](#)

Impact Recovery Systems provides high quality traffic products that were fully impactable, to increase traffic product longevity and decrease replacement costs. Impact Recovery Today, with safety as their mission, they have expanded their scope to include products that not only decrease replacement costs but also supply a higher level of safety and security for roads, highways, train platforms, work zones, parking lots and pedestrian areas.

Axis Communications > [Showroom Booth 2](#)

Axis is an IT company offering network video solutions for professional installations. The company is the global market leader in network video, driving the ongoing shift from analog to digital video surveillance. Axis products and solutions focus on security surveillance and remote monitoring, and are based on innovative, open technology platforms.

Iteris > [Showroom Booth 3](#)

Iteris Inc. is a leader in providing intelligent information solutions to the traffic management market. The company is focused on the development and application of advanced technologies and software-based information systems that reduce traffic congestion, provide measurement, management and predictive traffic analytics, and improve the safety of surface transportation systems.

Encom > [Showroom Booth 4](#)

ENCOM has been designing superior wireless products and networks for governments and industry for more than 20 years. We pair industry-leading products with expert support to ensure you get an effective and affordable wireless system that grows with your enterprise.

trafficnow > [Showroom Booth 5](#)

trafficnow is a privately owned society with an innovative and entrepreneurial spirit. The objective is to collaborate with the private and public sector to optimize the traffic flow in urban and inter-urban environments. trafficnow offers cost reduced installations for the end customer and provides online technical attention to increase system functionality and service.

Showroom Vendors

Quick Pay > Showroom Booth 6

QP QuickPay (QP) is a secure mobile payment platform that helps you quickly and conveniently find and pay for parking using your mobile phone. You can use QP in any parking location where you see a QP QuickPay sign. The QP QuickPay smartphone app is available as a free download for iPhone and Android, and you can also use the service via voice or text message from any mobile phone.

3M > Showroom Booth 7

Armed with innovative technology and industry experience, 3M provides ingenious solutions for a variety of transportation industries across the globe. Our complete spectrum of products, services and solutions address the common challenges of the motor vehicle industry to enhance organizational performance and productivity.

Alpha Technologies > Showroom Booth 8

Alpha Technologies Inc., a member of The Alpha Group, provides the Cable TV/Broadband, Industrial and Renewable Energy industries with the most reliable, technologically advanced and cost-effective powering solutions available. Alpha offers innovative powering solutions that are designed for the future; built to support expansion and provide unlimited opportunity.

Siemens > Showroom Booth 9

Siemens offers a full range of on-street traffic equipment to round out your traffic management system. From cabinets to controllers to adaptive traffic control capabilities, central management software and traffic signals, we have everything you need to keep traffic running smoothly.

Dialight > Showroom Booth 10

Dialight defines the current state of LED lighting technology with continuous innovations in light output, efficacy and reliability for our complete line of high-specification lighting fixtures specifically designed for industrial, commercial, hazardous location, transportation & public infrastructure applications.

Showroom Vendors

MS Sedco > [Showroom Booth 11](#)

MS Sedco is an industry leader in sensor and switch systems for automatic door and pedestrian and traffic control. Our products are designed to work with any complementary system from any manufacturer and to meet the quality and price specifications of the most demanding customer. And we guarantee every one for at least a year from the date of purchase.

Eberle Design Inc. > [Showroom Booth 12](#)

EDI provides traffic control and access professionals with reliable hi-tech component products (signal monitors, vehicle detectors, power supplies, load switches, flashers, bus interface units, and detector harnesses) that offer value added benefits for traffic signal cabinets as well as gate, parking, and/or door operators.

Trans-Tech > [Showroom Booth 13](#)

Trans-Tech manufactures LED signs and signals for the parking and traffic control industries. Offering an entire line of LED parking garage signs, including cashier and fee display signs, entrance and exit signs, interior wayfinding signs, space available and tower signs, and warning and low clearance signs.

Trynex > [Showroom Booth 14 & outdoor display](#)

Trynex offers a complete line of professional-duty equipment catering to a wide variety of end users with three product lines. SnowEx for snow and ice control equipment. SweepEx modular broom and sweeping systems and TurfEx maintenance equipment.

Graco > [Showroom Booth 15 & outdoor display](#)

Graco Inc. is a leading provider of premium pumps and spray equipment for fluid handling in the construction, manufacturing, processing and maintenance. Graco offers innovative products that set the quality standard for spray finishing, paint circulation, lubrication, sealant and adhesives dispensing, process application, and contractor power equipment. These best-in-class products are manufactured in the U.S. and China and supplied through our distribution centers in Minnesota, Belgium, Japan, Korea, China and Australia.

Showroom Vendors

Earthcam > Showroom Booth 16

EarthCam, Inc. is the global leader in providing webcam content, technology and services. Founded in 1996, the company's expertise includes delivering millions of images daily and developing technology to manage camera networks worldwide.

Work Area Protection > Showroom Booth 17 & outdoor display

Work Area has grown to be one of the largest and most respected manufacturers in the field of temporary traffic control devices. With products, such as the Channelizer Cone, the Manhole Protector Ring and the Portable Message Center Trailers, that complements the full line of products that Work Area markets worldwide.

Nucor > Showroom Booth 18

Nucor Steel Marion, Inc. is a steel mini mill that manufactures a full line of specialty steel products in the specific shapes needed for the highway, construction and agricultural industries. We specialize in rebar, breakaway U-channel, small and mid-range signposts, delineators and cable barrier systems.

Pexco > Showroom Booth 19

Based in Atlanta and with ten plants in the U.S. and Mexico, Pexco is a North American leader in the design and fabrication of extruded plastics products. We provide standard and custom parts and components to manufacturers and end-users across industrial, life science, commercial and consumer market applications.

MDI > Showroom Booth 20

MDI Traffic Control Products has revolutionized signage used for temporary traffic control at work zones and emergency situations. We are one of the major suppliers to the Construction, Utility, and Emergency Responder industries. Our products include Windmaster sign stands, Roll-Up signs, Duralatch crossbracing, MDI Compact Sign System, Emergency Responder vests and power flares.T

TAPCO Lounge Vendors

Astro Optics > TAPCO Lounge Booth 1

Astro Optics Corp. specializes in the manufacturing of a wide variety of Construction Zone Markers, Delineators, Reflective Lenses and Channelizing/Traffic Control Devices. These include unique patented products such as our TrafficGuard Portable Speed Bump Series. We also offer quality adhesive products.

Total Security Warehouse > TAPCO Lounge Booth 2

Total Security Warehouse is a stocking distributor for Door King, Chamberlain/Liftmaster and Hy-Security. TSW sells only the best field tested products for industry professionals.

TAPCO - Parking > TAPCO Lounge Booth 3

TAPCO's Parking and security Systems department offers complete in-house design, engineering and service, we are able to provide a turn-key solution or simply provide materials and installation. .

TAPCO - Signal > TAPCO Lounge Booth 4

TAPCO's catalog of traffic signals and related products represents years of experience and know how. We are able to assist you with these products, from initial planning through installation and ongoing service contracts.

TAPCO - StreetScape > TAPCO Lounge Booth 5

TAPCO's StreetScape product lines will provide solutions for all of your residential, commercial, and municipal designing needs whether it is mainstreeting your city with way finding signage on decorative poles or adding vintage luminaires & safe decorative mailboxes.

Lumecon > TAPCO Lounge Booth 6

Lumecon LLC, is a US manufacturer of its own LED wallpacks, flood lights, canopies and post-top ornamental LED products, all of which feature the Lumecon ETD™ (Enhanced Thermal Dissipation) System.

TAPCO Lounge Vendors

TAPCO - V-Loc® > TAPCO Lounge Booth 7

V-Loc® anchors posts for signs, mailboxes and other applications. The V-Loc® anchor socket can be installed in concrete, asphalt or dirt safely by one person in a matter of minutes either by hand or power driver.

TAPCO - Digital > TAPCO Lounge Booth 8

TAPCO's Digital Department provides state of the art equipment, software and services for your sign production, inspection & maintenance needs.

> Blinker Showcase

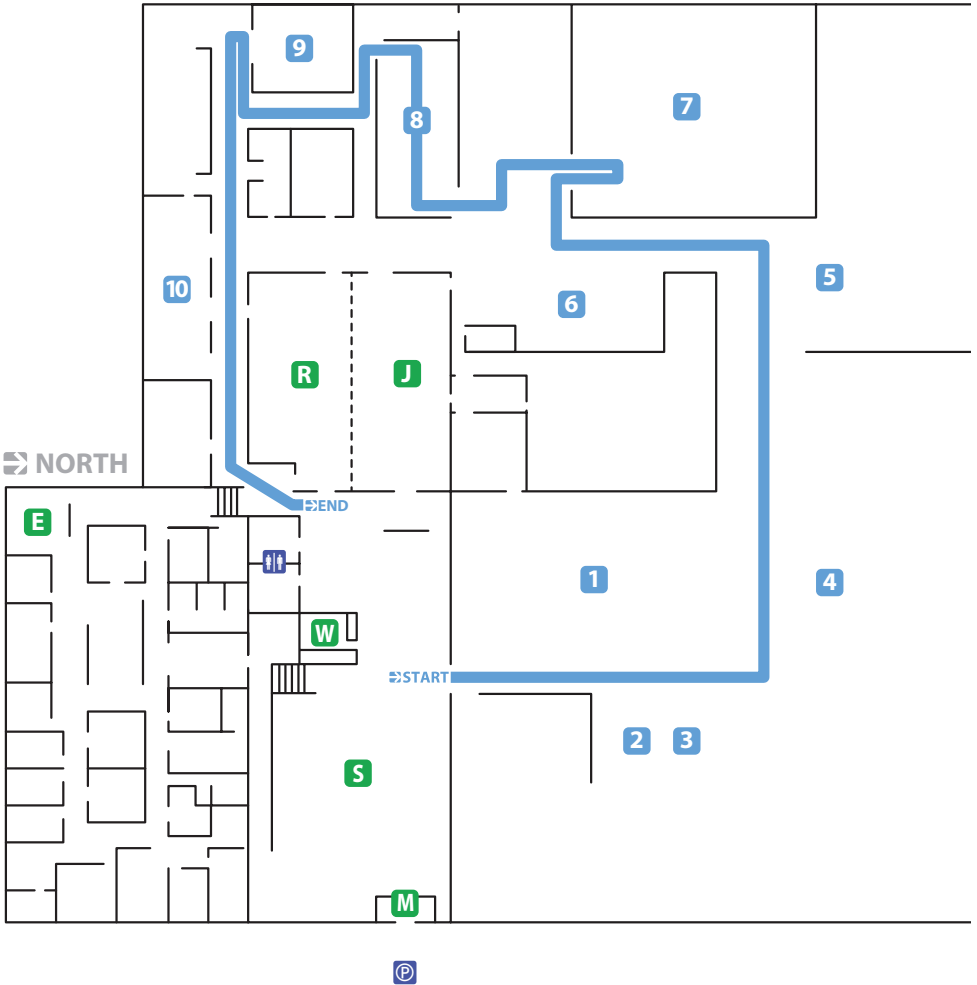
TAPCO - BlinkerSign & BlinkerRadar

The Blinker Showcase features demonstrations for TAPCO's Intelligent Warning Systems. Including BlinkerSign®, BlinkerRadar®, etc. ATTSA Award winning Flood Warning System, and Wrong Way Warning System on display.



Guided Tours

TAPCO Facility Map



1 BlinkerSigns®

2 Die-Cuts

3 StreetScape

4 BlinkerSigns®

5 V-Loc®

6 Laminating

7 Sign Shop

8 Art Room

9 Marketing

10 Sales

R Ray Bergholz
Training Center

J June Bergholz
Training Center

E Executive
Conference Room

M Main Entrance

S Showroom

W Will Call

P Parking Lot

♿ Public Restrooms

The National Work Zone Memorial

Respect and Remembrance: Reflections of Life on the Road

Since the early days of our nation's roadways, men, women and children have senselessly died in work zones. The number of deaths has decreased - from 868 in 1999 to 576 in 2010. The unseen faces and lives have, in many cases, been forgotten - until now.

Unveiled in April 2002, "The National Work Zone Memorial - Respect and Remembrance: Reflections of Life on the Road" program is a living tribute to their memory, traveling to communities cross-country year-round to raise public awareness of the need to respect and stay safe in America's roadway work zones.

The vast majority of those killed in roadway work zone accidents are drivers. However, the tragic loss of roadway workers, police, fire and rescue personnel who also lose their lives in these accidents are too often overlooked. As America strains to keep up with the demands on its roadways, the men and women who shoulder that workload find themselves performing their duties in what can be a very dangerous workplace. Although several states have created memorials to acknowledge their sacrifice, the National Work Zone Memorial stands as the only monument to the loss of roadway workers, drivers, and public safety personnel in all states.

Work Zone Memorial

National Work Zone Memorial Sponsors

Names are placed on the Memorial in the order received, not chronologically or alphabetically. A small icon appears next to each name denoting Work Zone Worker, Motorist, Law Enforcement Officer, Public Safety Official or Child. No definitive national record exists of those killed in work zones, so Memorial organizers must rely on the annual submissions of state departments of transportation and other verifiable sources for new names. The Foundation will accept the name of anyone killed in a roadway work zone at any time. The Memorial is updated annually with the new names that are confirmed by the Foundation. Name submissions are accepted through December 14, 2013 to be included on the National Work Zone Memorial Exhibition in 2014.

To become a donor, visit www.atssa.com click on “The Foundation” tab, and follow the prompts to download an annual giving sponsorship form. The names of donors appear on a panel of the Memorial.



Schedule of Events

7:00 AM – 8:00 AM	Registration <i>Enjoy coffee and bagels after checking in.</i>	
8:00 AM – 8:50 AM	Michael J. Berg, P.E. <i>(see page 15)</i>	
9:00 AM – 9:50 AM	Mike Dreznes <i>(see page 16)</i>	Paul J. Carlson, Ph.D., P.E. <i>(see page 17)</i>
10:00 AM – 10:50 AM	David A. Noyce, Ph.D., P.E. <i>(see page 18)</i>	Lonnie Tebow <i>(see page 19)</i>
11:00 AM – 11:50 AM	Nate Smith <i>(see page 20)</i>	Dean C. Alberson, Ph.D., P.E. <i>(see page 21)</i>
12:00 PM – 1:00 PM	Lunch served	
1:00 PM – 1:50 PM	Robert Nordentoft MBA, BSc <i>(see page 22)</i>	Walt Townsend <i>(see page 23)</i>
2:00 PM – 2:50 PM	Mark Fayta <i>(see page 24)</i>	Joaquin Segl <i>(see page 25)</i>

Schedule is subject to change

8:00 AM – 8:50 AM

Welcome & Opening Remarks

Keynote Speaker



Michael J. Berg, P.E.

*Deputy Secretary – WisDOT
(Wisconsin Department of Transportation)*

Michael Berg is the chief operating officer for a state agency with 3,500 employees, dozens of field offices and an annual budget of more than \$3 billion. Berg is a native of Green Bay, Wisconsin, and attended the University of Wisconsin-Madison majoring in civil and environmental engineering. He joined WisDOT as an engineer in the Green Bay office, steadily rising through the ranks, eventually becoming a supervisor in design and construction in 1988. In 2000, Berg was named district director for WisDOT's former District 4, heading up the department's Wisconsin Rapids office. In 2005, Berg returned to Green Bay as director of the Northeast Region, where he oversaw many large and small transportation improvement projects, including the start of construction on the massive US 41 project.



9:00AM - 9:50AM

Ray Bergholz Training Center

Topic › Forgiven Highways and
the Decade of Action



Mike Dreznes

Executive Vice President

– IRF (International Road Federation)

Dreznes has spent the last twenty-seven years working to make the roads safer around the world. He is recognized as one of the world's leading experts on roadside safety promoting the concept of "Forgiven Highways," and has conducted multiple road safety training seminars on roadside safety, work zone safety, vulnerable user safety and road safety audit in more than fifty countries around the world.

Dreznes is the Co-Chairman of the Transportation Research Board (TRB) AFB20 (2) Roadside Safety Sub-Committee on International Research Activities, a member of the PIARC Road Safety Technical Committee 3.2 Design and Operation of Safer Road Infrastructure, Co-Chairman of the United Nations Road Safety Collaboration (UNRSC) Pillar 2: Safer Roads and Mobility Project Group, Co-Chairman of TASK FORCE 13 Committee on Work Zone Safety, Co-Chairman of the IRF Washington Road Safety Working Group as well as Chairman of the IRF Fellowship Educational Foundation.



9:00AM - 9:50AM

June Bergholz Training Center

Topic › Traffic Signs and Pavement Markings that
Meet the Need of the Drivers and the MUTCD



Paul J. Carlson, Ph.D., P.E.

*Research Engineer Division Head
– TTI (Texas Transportation Institute)*

Dr. Carlson is a Research Engineer at the Texas Transportation Institute (TTI), a member of The Texas A&M University System. He is the Division Head of the Operations and Design Division, where he is responsible for leading a research program broadly focused on safety, design, and operations. He coordinates the state traffic safety and design research, promotes national research initiatives, facilitates sponsor interaction, and manages a number of research projects.

Dr. Carlson leads TTI's Visibility Research Laboratory located in TTI's new State Headquarters and Research Building (opened in 2009). This facility has been used to test new materials for traffic signs and pavement markings. TTI has also used the facility to develop and test their mobile luminance measurement system. The laboratory's equipment will measure the photometric properties of traffic control devices and lights to ensure safe travel for nighttime drivers.



10:00AM – 10:50 AM

Ray Bergholz Training Center

Topic › The Human (Factors) Challenge
in Transportation Safety



David A. Noyce, Ph.D., P.E.

*Director, University of Wisconsin-Madison
Department of Civil and Environmental Engineering
– UW Madison*

David A. Noyce, Ph.D., P.E. is a Professor and member of the transportation engineering faculty in the Department of Civil and Environmental Engineering at the University of Wisconsin – Madison (UW-Madison). Dr. Noyce has over 28 years of experience in transportation engineering including state government, private consulting, and academia. His research is focused on the operational and behavioral aspects of transportation safety. He has spent the last four years working with full-scale driving simulations and studying driver comprehension and behavior related to various traffic control devices. He has used the simulator to study guide signs, traffic signal displays, rumble strips, young and old drivers, and the effects of low Blood Alcohol Content (BAC) on driver performance. He is also very interested in crash data recording (black box) technology and vehicle crash analysis, and has worked with NHTSA and the Massachusetts Governor’s Highway Safety Bureau.



10:00AM – 10:50 AM

June Bergholz Training Center

Topic › Improve Performance with Operations Management



Lonnie Tebow

*Director of Transportation & Traffic Programs
– IMSA (International Municipal Signal Association)*

Lonnie Tebow is the Director of IMSA's (International Municipal Signal Association) Transportation Programs. As director he works with traffic signal, sign, pavement markings, temporary traffic control and roadway lighting managers, supervisors and technicians to address the technical issues and industry trends that they confront as well as helping to develop certification programs for professionals working with traffic control devices. Prior to beginning full time employment at IMSA in 2009, He was the Superintendent for Traffic Operations at the City of Norfolk, Virginia and worked in traffic signal operations and maintenance, for public and private agencies, since 1991. An active member of IMSA since 1992, he was project leader in the revision of three traffic signal certification programs and the creation of two new certification programs. He was also a member of the TAC (Technical Advisory Committee) in a joint IMSA-ITE (Institute of Transportation Engineers) effort to create the Traffic Signal Maintenance Handbook. He has published technical articles in the IMSA Journal and was included in the Transportation Research Circular E-C135-Maintenance Management 2009. Lonnie Tebow received a Master of Arts in Transportation Policy, Operations and Logistics from George Mason University.



Your Partner in PUBLIC SAFETY

11:00PM – 11:50 PM

Ray Bergholz Training Center

Topic › Congressional Hot Topics
and How it Impacts Funding



Nate Smith

*Associate Director of Government Relations
– ATSSA (American Traffic Safety Services Association)*

Nate Smith currently serves as the Associate Director of Government Relations for the American Traffic Safety Services Association (ATSSA) where he focuses on both federal and grassroots lobbying, PAC management, government relations-related communications, and advocacy strategy. His regular travels throughout the country allow him to speak on many government relations issues. In addition, Smith helps facilitate two national transportation coalitions and several association member committees.

Smith is the Immediate Past President of the Washington, D.C. Chapter of the UNH Alumni Association and also has served as the Deputy Chair for the Young Professionals in Transportation (YPT), a 1,500+ member national organization for transportation professionals. Smith is an active member of the American League of Lobbyists, where he is a Board member for the Young Lobbyists Network (YLN), and the “Road Gang” – Washington’s Highway Fraternity.



11:00PM – 11:50 PM

June Bergholz Training Center

Topic › MASH, the new and improved NCHRP
Report 350 for Roadside Safety



Dean C. Alberson, Ph.D., P.E.

*Assistant Agency Director, Research Engineer,
Program Manager – TTI (Texas Transportation Institute)*

Dr. Dean C. Alberson is an Assistant Agency Director assisting divisions in the pursuit of new research initiatives. He is also a research engineer and program manager of the Crashworthy Structures Program. He obtained his Ph.D. in Civil Engineering Structures at Texas A&M University. He is involved in the full-scale testing and evaluation of highway safety products. He is also active in the development of new innovative products and subsequent partnering with industry to bring these new products to market. Dr. Alberson is a registered professional engineer.

1:00PM – 1:50PM

Ray Bergholz Training Center

Topic > The Evolution of ITS Sensors,
Talking Cars, Bluetooth and Beyond.



Robert Nordentoft MBA, BSc
(Electronics engineering)

General Manager
– *trafficnow*

Robert has spent the last 15 years working with all types of non-intrusive detection. He had a leading technical role at Image Sensing Systems Inc. in the expansion of Above Ground Detection into Europe and Middle East for a decade; first Machine Vision Processing, and later also Radar technology and License Plate Recognition. He has been heavily involved in everything from new product design to installation and project management.

With his passion for disruptive technology and innovation he co-launched trafficnow as an ITS laboratory in 2008 with focus on real-time traffic information. He has, since then, dedicated his time to innovation in ITS, and particularly in bringing Bluetooth Detection to the roadside.

trafficnow[®]

1:00PM – 1:50PM

June Bergholz Training Center

Topic › Tools for Advanced Traffic
Management Technology



Walt Townsend

Applications Engineer
– *Siemens Industry*

Walt Townsend is a Applications Engineer with Siemens ITS. A 1986 graduate of the Georgia Institute of Technology, he has been involved in the design, implementation, and deployment of advanced Traffic Control Systems for over 26 years. In his years with Siemens ITS, he has provided design, integration, and customer support for many i2, CONCERT, and TACTICS systems. Previous positions with Siemens include Systems Architect, Consulting Engineer, Engineering Project Manager and the Regional Manager, Southeast.

SIEMENS

2:00PM – 2:50PM

Ray Bergholz Training Center

Topic › Non-Intrusive Vehicle Detection



Mark Fayta

*Regional Manager Roadway Sensors Division
– Iteris, Inc*

Mark has held many professional positions during his 30 year career in the field of vehicle detection technology. Those positions include Electronics Design Engineer, Product Development Manager, Sales Manager and also Company Owner. Mark's manufacturing background in vehicle detection systems include; weigh in motion scale systems, inductive loop design, in pavement sensor development and above ground video & radar detection systems design & installation. Mark was born in Chicago and also earned his Electronics Engineering degree there.



2:00PM – 2:50PM

June Bergholz Training Center

Topic > Wireless ITS applications

**Joaquin Segl*****Vice President***
– ENCOM Wireless

For over ten years, Joaquin has been directly involved in the adoption and implementation of new technologies in the area of ITS. During his career, he has served in a variety of corporate positions including executive management, sales, operations, design, and project management in Mexico, Canada and the US. During his former role as General Manager for ENCOM Canada, he lead the team that introduced wireless broadband technologies for ITS applications. Prior to re-joining ENCOM, Mr. Segl served as Vice-president for Signal Group, where he was responsible for planning and implementing the marketing and sales strategy for both PEEK Traffic Corporation and Rayolite Inc. during this tenure, he oversaw the launch and introduction of a new traffic controller based on new the ATC and NTCIP standards.

Prior to joining the ITS world, Mr. Segl was the founder and president of SEGLLC, a company that provided guidance and direction on enterprise risk management. The company become one of the fastest growing consulting firms in Mexico, in 1999 it was acquired by INSAD. SA de CV. where Mr. Segl held a corporate Executive Vice President position until he relocated to Canada. Mr. Segl currently resides in Texas where he is in charge of developing the strategies for the development of the recently formed ENCOM Wireless USA.



General Information

Speakers

The Traffic room will be available for your use in preparation for your session. Please see the registration for more information.

Vendors

Please visit the vendor displays located in the Showroom, TAPCO Lounge & IWS Center.. A complete listing of vendors and their booth locations are shown on pages 2 -9.

Cell Phones and Communications Devices

Please be courteous to fellow attendees and presenters by setting all communication devices to 'vibrate' or 'off' before sessions or meetings. If you are using a laptop, please mute all audio sounds. If you need to make or take a call, please leave the session room.

Restrictions

Video and/or audio recording of sessions or technical exhibits, as well as the unauthorized sale or use of copyrighted material, is strictly prohibited.

Police

Emergency dial 911

Brown Deer Police Department
non-emergency dial (414) 371-2900

Evacuation

In case of emergency, use the main entrance to exit the building. The evacuation meeting location is the main parking lot on 51st Street and Brown Deer Road.



General Information

Medical Facilities

Hospitals:

Rogers Memorial Hospital
4600 West Schroeder Drive
Milwaukee, WI 53223
(414) 355-9000

Aurora Advanced Healthcare
3003 W Good Hope Road
Milwaukee, WI 53209
(414) 352-3100

Urgent Care Centers:

Brown Deer Urgent Care
9252 N Green Bay Road
Brown Deer, WI 53209
(414) 527-7565

Concentra Urgent Care
5500 West Brown Deer Road #400
Milwaukee, WI 53223
(414) 355-4300

Event Feedback

Attendees that have supplied us with their email address will receive an event survey. Please let us know if the show provided you with the experience and information that you wanted. We are always looking for ways to improve our event.

2014 Annual TAPCO Training Showcase

The next showcase will be held on October 22, 2014 at TAPCO headquarters 5100 W Brown Deer Road, Brown Deer, WI 53223. More information will be posted at www.tapconet.com/events throughout the year.



2013 Wednesday, October 23rd

ANNUAL TAPCO TRAINING SHOWCASE

Time	Credit	Session
9:00 AM – 9:50 AM	1.0 PDH	<input type="checkbox"/> Forging Highways and the Decade of Action
	1.0 PDH	<input type="checkbox"/> Traffic Signs and Pavement Markings that Meet the Need of the Drivers and the MUTCD
10:00 AM – 10:50 AM	1.0 PDH	<input type="checkbox"/> The Human (Factors) Challenge in transportation Safety
	1.0 PDH	<input type="checkbox"/> Improve Performance with Operations Management
11:00 AM – 11:50 AM	1.0 PDH	<input type="checkbox"/> Congressional Hot Topics and How they Impact Funding
	1.0 PDH	<input type="checkbox"/> MASH, the new and improved NCHRP Report 350 for Roadside Safety
1:00 PM – 1:50 PM	1.0 PDH	<input type="checkbox"/> The Evolution of ITS Sensors, Talking Cars, Bluetooth and Beyond.
	1.0 PDH	<input type="checkbox"/> Tools for Advanced Traffic Management Technology
2:00 PM – 2:50 PM	1.0 PDH	<input type="checkbox"/> Non-Intrusive Vehicle Detection
	1.0 PDH	<input type="checkbox"/> Wireless ITS applications
	Total PDH	_____ Maximum five (5)

Name

Address

Phone

E-mail

I certify that the information provided in this document is true.

Signature

Date



New for the 2013 Showcase

Professional Development Hours (PDH)

Attendees of the 2013 Annual TAPCO Training Showcase will earn Professional Development Hours (PDHs) for sessions they attend.

Many engineering licensing jurisdictions require demonstration of continuing professional competency as a condition for licensure. The Transportation Professional Certification Board, Inc. requires PDH units for Professional Traffic Operations Engineer and Professional Transportation Planner certification renewals.

- Your participation at this meeting earns one (1) PDH credit per session
- Total possible of five (5) PDH units

It is the responsibility of each attendee to track their attendance for PDH hours earned during the conference (checklist provided on page 28). To request a certificate of attendance fill out page 28 and return to the TAPCO the registration table. If a certificate of attendance is requested, it will be distributed via email after the conference has ended.

2014

Save the Date

ANNUAL TAPCO TRAINING SHOWCASE

Wednesday, October 22, 2014

- Latest traffic safety innovations
- Parking & security innovations
- Product demonstrations
- Industry expert speakers



PRESENTED AND HOSTED BY



SPECIAL THANKS TO OUR PARTNERS

